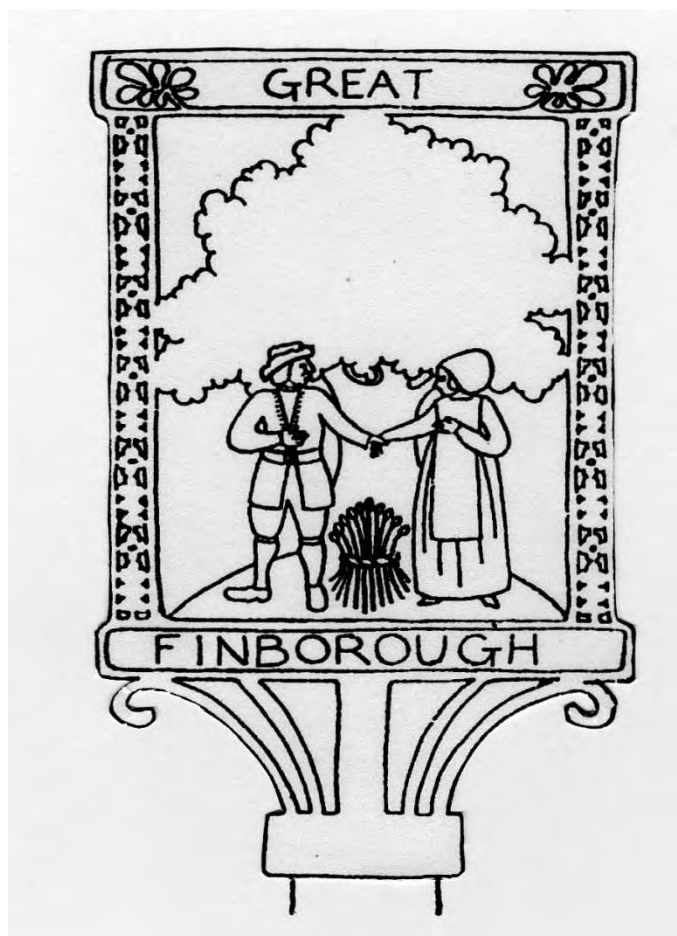


GREAT FINBOROUGH NEWSLETTER



**OCTOBER 2010
ISSUE 412**



VILLAGE DIARY – OCTOBER 2010

4	6pm	Brownies, Primary School
6	tba	WI Group meeting, Stowupland Village Hall
7	12.15pm	Ladies Lunch, Church Room
7	2pm	Candlestick Club, Buxhall Village Hall
7	7pm	Youth Club, Pettiward Hall
8	6.30pm	Beetledrive, Onehouse Church Room
11	6pm	Brownies, Primary School
14	4.30pm	Skylarks, Onehouse Church Room
14	7.30pm	Garden Club meeting, Pettiward Hall
14	7pm	Youth Club, Pettiward Hall
15	7.30pm	Spectacular Shopping Evening, Stow Rugby Club
16	6.30pm	Autumn Supper, Pettiward Hall
18	6pm	Brownies, Primary School
18	7.30pm	Community Council, Pettiward Hall
20	7.30pm	Buxhall Women's Institute
21	6.30pm	Charity Bingo, Pettiward Hall
26	12.30pm	FHOBS lunch, Buxhall Village Hall
30	6pm	Fancy Dress Disco, Pettiward Hall

VILLAGE DIARY – NOVEMBER 2010

1	7.30pm	Parish Council, Pettiward Hall
10	2pm	Candlestick Club, Buxhall Village Hall
20	7.30pm	Quiz Night, Pettiward Hall

ST JOHN'S TABLE TENNIS

Thursday Nights 7.30-9.30pm in the Church Room:

14 and 28 October 2010

Why not try a bit of gentle exercise with a game of Table Tennis?

New and experienced players welcome; especially young people.

£1 per session. Give me a ring for further details. **Derek Ames (613328)**

The Newsletter is produced by Great Finborough Parish Council, printed by Gipping Press, and distributed to all households in the village free of charge

Editorial

My call to villagers to express strong opinions last month had some results. One person emailed me to complain about the misuse of the apostrophe in an advertisement – and provided an amusing link to a YouTube video on the same theme. The other 'phoned to tell me we have a new Police Community Support Officer – which was news to me. Thank you. This month can we aim for something more controversial?

Do read Mary Williams' piece on the Pettiwards. I'm sure you will agree she should provide more snippets for future newsletters as she examines the Pettiward notebooks loaned to her by the family.

If you know someone newly arrived and living in the village, or neighbours moving on, please let me know. 15 October is the copy deadline for material for the November edition. Please put 'newsletter' in the header if you are emailing. Norman and I welcome visitors so if you need to contact me 'phone, email or call in to Park Cottage any time. The kettle is always on.

Sally Gooch

QUIZ NIGHT

SATURDAY 20 NOVEMBER 2010 7.30pm

IN PETTIWARD HALL

TEAMS UP TO 6 PEOPLE – PRIZES AND RAFFLE

£5 PER PERSON TO INCLUDE SUPPER. BRING YOUR OWN DRINKS AND NIBBLES

*ALL PROCEEDS TO FUND VILLAGE AMENITIES
BOOK YOUR PLACES WITH NORMAN – 677940*

News from the Parish Council

Meeting of the Council – September 2010

As no Councillor was willing to become the Chair on a permanent basis the Parish Council unanimously agreed to elect a temporary Chair at each meeting until the situation is resolved. Richard Brice was elected to take the chair for the September meeting. Norman Vendittelli was co-opted to fill the vacancy left by Debbie Ball's resignation until next year's elections.

Sian Uttley, the village's current Police Community Support Officer, reported that no crimes in the village were reported to the Police in the period 5 July to 6 September 2010, compared with three in the same period in 2009. There were two calls about antisocial behaviour involving vehicles and one relating to a neighbour dispute.

Penny Otton reported on her work as a County Councillor in respect of the local area, including changes to bus services, Council tax, funding cuts, and a footpath diversion. The District Council's plans for the Forge Caravan site were discussed. The Parish Council agreed to write to MSDC expressing concern regarding the absence of consultation and the allocation of public funds.

The Parish Council decided that it would proceed with compulsory purchase or lease of an area of land for allotments, if no other options were available. It was decided to await feedback from John Davey, prior to proceeding. The management of the children's play area and related issues were discussed. The next meeting is on 1 November 2010 in Pettiward Hall starting at 7.30pm.

Speed Camera

The village needs more volunteers to get the speed camera programme for the village underway. Please contact me for more information.

Giles Hill

TRM Web Design

website design - website hosting – database integrated sites
search engine optimisation – virtual reality panoramas
online video – multimedia cd-rom production
flash/shockwave media

www.todd.co.uk 01473 89099 / 07876 024214 trm@todd.co.uk

News from your District Councillor

Recycling Visit

Further to the detailed advice on recycling in the recent 'Green News' which I am circulating around the villages, I am arranging a further opportunity to visit the Materials Recycling Facility (MRF) at Great Blakenham, the destination for the contents of all the green bins. This will be some time in November, for a maximum of ten people. If you want to see how the waste is sorted, where it goes and how it is re-used, please let me know. The tour also includes a presentation of all the 'do's and don'ts' of what goes in the green bins.

The Forge Caravan Site

Mid Suffolk District Council is seeking to buy this site and adjacent land in Combs Lane to ensure it is improved and responsibly managed. This intention was set out in the published draft Stowmarket Area Action Plan last year. If you wish to read a detailed report of the story of the site, please let me know.

Combs Lane Traffic

How fast do you drive along Combs Lane? Recently a cat was struck and killed by a vehicle that failed to stop, causing great distress to the pet's owner. Cats are extremely agile, and are likely to avoid traffic at 30 or 40mph, but some people are driving far above the 40mph speed limit. Please slow down, and be aware of pedestrians, cyclists and pets. To get in touch about anything, call me, email me or write me a letter. See Who's Who.

John Matthissen



Annya Stoddart
acupuncture
and yoga

Pain Clinic
Fertility Support Clinic
Movement Therapy

- Painful/irregular Periods
- Hayfever/Blocked Sinuses
- Backpain/Sciatica/Migraines
- IVF Support

Acupuncture can help to reduce the severity of your symptoms.

Tel: 07841 203412
Email: annya@annya-stoddart.co.uk
www.annya-stoddart.co.uk

The Green Room
Stowmarket IP14 1EF.

Recycling

Recently I went to see the recycling plant John mentions above. We saw the plant working and many of the processes involved – including hand sorting. I learned that the reason we are asked to remove tops from plastic bottles is that when the bottle is crushed during the process the top may shoot off at high speed under the huge pressures used and could injure someone.

Did you know that items smaller than a small fist fall through the system and end up as landfill so if you want to put foil in your recycling bin, please collect it until you have a fist sized lump before adding it, or your recycling effort is in vain. This makes sense when you understand the reasons and I confess I've committed both these sins in the past because I did not know the reason behind the request. Items welcomed include:

- Loose paper and card
- Cans and tins
- Aluminium foil and foil containers
- Plastic bottles with their lids (but separately)
- Hard plastic containers like yoghurt pots.

Clean and dry please and loose in our recycling bins. This really was an interesting, informative visit **and** you get to wear safety clothing and have your own walky-talky! Great fun, go and see for yourself.

Mary Williams



All general plumbing work carried out
Maintenance, repairs and improvements
Oil boilers serviced, fitted and repaired
Oftec registered

Jim Prior
1 Oak Close, Great Finborough,
Stowmarket
Tel 01449 675096
Mobile 07917 605699



A New Friends of St Elizabeth Hospice Group is being set up in the Stowmarket area. Anyone interested in joining is welcome to attend an open afternoon on Wednesday 20 October at The Rookery Bowling Club, Finborough Road, Stowmarket, from 2-4pm. Friends Groups are made up of volunteers and supporters who wish to work together to help raise money for the charity, which provides specialist services free of charge for patients throughout East Suffolk, including the Stowmarket area. The open afternoon will include a talk about the Hospice and a chance to meet staff and members of other Friends groups. Refreshments will be provided. To find out more email hayley.hayler@stelizabethhospice.org.uk or call 01473 723600.

Sarah Cawley

The Mill House Cattery

Family run business - Open all year
For bookings or further information
Please call: Mark or Lisa Gilson 01449 674853
Or visit our website:
www.themillhousecattery.co.uk
The Mill House, Valley Lane, Gt. Finborough

ART EXHIBITION - OPEN STUDIO

At 1 High View Cottage, Stowmarket Rd.,
Old Newton, IP14 4PE. Tel: 01449 673769

Open Saturdays and Sundays
from 6 November to 19 December.
10am to 4pm or by arrangement .

Paintings by local artists
Mary Brewster, Patricia Potter, & June Morton.

Plus cards, jewellery and home produce .
15% of proceeds will go to
E.A.C.H. Tree House Appeal

IDM Training Services

PUTTING SAFETY FIRST

Do you, or your employees, require Training in Health, Safety related matters? IDM Training Services can deliver a variety of cost effective courses at your premises covering the following subjects:

Forklift Trucks (CITB, RTITB and In-House)
Risk Assessments (CIEH Level 2/3)
Manual Handling (CIEH Level 2)
Health and Safety in the Workplace (CIEH Level 2/3)
Health and Safety Awareness
Abrasive Wheels
Working at Height
Toolbox Talks
Asbestos Awareness
~~Banksman~~ Vehicle Marshalling
Pollution Prevention and Spill Response
Training Skills and Practice
Bespoke Training and Consultancy Available

Enquiries also being taken for

IOSH Managing Safely Courses,
CIEH Level 3 Award Preparing to Teach in the
Lifelong Sector (PTLLS)
CIEH Level 3 Award Training Skills and Practice

IDM Training Services
~~Essex~~ High Road, Great Finborough, Suffolk, IP14 3AQ.
Tel: 01449 613699 Mob: 07967 566 180 Email: iain@idmtraining.co.uk

THE BUXHALL CROWN

Open 7 days a week (drinks only Sunday evenings)

Full a la carte menu. Or 2 courses for £10.

See our website:

www.thebuxhallcrown.co.uk

or ring Barry and Adam on: 01449 736 521

PHILIP CHAPMAN

Block paving, Patios, Paths, Driveways, Fencing
Small building work
Mini digger and driver hire

Free Estimates
Prompt Service

All work carried out to the highest standard

Please call Phil on: 01449 777088 or 07891 777459

My name is Kevin Hall

I live in Australia. In October I will be travelling to the UK to visit relatives and to take in some of the places where I grew up in the 1960's. I hope to visit the Primary School, the Post Office, the Chestnut Horse and the big Chestnut Tree to name but a few. I will be there around 10 October – it must be lucky: 10.10.10! I'm hoping to track down Alan Durrant, an old school friend who used to live directly opposite the school at the intersection with the road to Buxhall. We used to live at Daphral Cottage on the High Road right next door to Mr Proctor, just up the road from Farmer Peads farm. I used to help him about the farm.

Kevin Hall

Beetle Drive

There will be a Beetle Drive on Friday 8 October in the Church Room, Onehouse, from 6.30-9.30pm. Adults £1, children 50pence and you can just turn up and pay on the door. Drinks and cakes will be available during the evening! Everybody welcome. Any queries contact me on 736025.

Carole Hearn

Transport for People with Disabilities

The Complex Needs Group which meets at Rushmere Community Resource Unit is asking as many disabled people as possible to complete a transport survey. We know transport is an issue for many disabled people so if you can help by encouraging as many as possible to complete the survey. Copies can be obtained from me by calling 01473 588505 or via James.Powell@optua.org.uk and should be returned to me by 30 November 2010.

Milly Gaskin

Time to Replace Your Boiler with the Latest Eco-Technology?

A micro-renewable energy solution based on your needs can reduce your running costs

Ground & Air Source Heat Pumps

Heat Recovery Ventilation • Solar PV

Solar Thermal • Wood-Burning Stoves

Wood & Pellet Boilers

Grants Available – MCS Accredited

t. 01449 737 494 w. www.ecolivinguk.com

ecoliving®
micro-renewable solutions for a sustainable future



Websites for small businesses organisations and clubs

Getting a website is cheaper
and easier than ever - you'll be
up and running in no time.

- Attract more customers
- Advertise your services
- Sell your products online
24hrs a day

PC Web Design

For help and professional advice telephone

01449 766612

News from Great Finborough & Buxhall Under 5s *Welcome Back!*

Huge thanks to everyone who supported our Summer fundraising effort. We raised a fantastic £500. Special thanks to the Liz Callaghan at Broad Oak for allowing us to use the grounds for our sports day.



It has been another busy start to the new academic year, which is a wonderful reflection on the brilliant Pre-School Team. We would like to thank all our children and parents who left in July. It was lovely to feel so appreciated for our hard work, and to receive such wonderful presents. We hope that you are enjoying your new schools – we miss you all.

Our new children are busy writing poems about themselves as part of our termly theme: 'Favourite Books'. They are settling in really well and we are looking forward to taking them all on their new learning journeys.

Dates for the diary!

Family Fancy Dress Disco

Saturday 30 October 6pm – 8pm at Pettward Hall

£4 adult. £2.50 child

£10 family ticket special

Price includes jacket spud meal.

Tickets and more information available from pre-school or any committee member, looking forward to seeing you there!



And finally a very early date, but you have to get in early with these things. We are planning a garage trail in May 2011, more details next year! Thank you for your continued support.

Jane Nunn

Dennis Green



CARPETS AND FLOORING

(01449) 774770

Dennis: 07879485215 Andrew: 07502121938

Supplier of a Wide range of Carpets Vinyl Tiles Laminate and Wood Flooring

NICF Master fitter- Eastern England overall flooring champion and carpet fitter of the year finalist

'For Personal service and all year competitive pricing why not give Dennis and Andrew the opportunity to quote for your flooring needs'

*'Home choose~ We will bring our shop to you'
Ring for an appointment*

Unit6b The Barn Glebe Farm Onehouse Stowmarket Suffolk IP 14 3HL



Charisma Hair

86a Forest Road – Onehouse

01449 677202

- Qualified and friendly staff
- Ear piercing
- Nail Technician
- Full range of styling and colouring and techniques
- Indola products for all your hair and care needs (Retail sizes available)

(Closed all day Mondays)

News from the Primary School

Autumn term is underway and all the children are settling into school well. We are very excited to see the Squirrel Garden coming on so well and we are so pleased with the new arbour. A big thank you to all the members of the Garden Club for arranging its erection. The children will make full use of it I am sure.

All our After School Clubs have commenced. This term we will be doing Tag Rugby. There will be football after school for the older children and we have entered the Bury League. The team will play on Saturdays. So Good Luck Finborough! Purple Class have visited the artworks exhibition at Blackthorpe Barn and are looking forward to a return visit from the artist to work with them this term. Many thanks for your continued support.

Stephen Dodd

News from the Friends of Great Finborough Primary School

Shopping Evening and Autumn Auction

Just a reminder that The Friends of Great Finborough Primary School are holding a Spectacular Shopping Evening and Autumn Auction on Friday 15 October at 7.30pm at Stowmarket Rugby Club. Advance ticket prices are £3 each or two for £5. £3.50 on the door. Tickets will include a complementary drink. To order your tickets to take advantage of this early Christmas shopping opportunity, please place money in clearly marked envelope into the 'Friends' box in the school foyer. Thank you for your continued fundraising support.

Lisa Gilson

Squirrel Garden

We are back in the garden after the Summer holidays. Thank you to all those who helped with the watering through the six weeks. We now have the seating area up for the children. A really big thank you to Great Finborough and District Garden Club for raising the funds to purchase it and an even bigger thank you for coming along and putting it together for us. We have plans to make a wildlife area in the garden, next to the new entrance and will be getting the children to help with this.

Sharla Goldsmith

ALL SEASONS LANDSCAPE GARDENING

- Garden Landscaping • Turf Laying •
- Paths & Patios • Garden Maintenance •
- Hedge Cutting • Fencing •
- Specialise in low maintenance gardens •

Reliable family business Fully Insured & Guaranteed

For FREE estimates and more information on our service call **Simon** on

01449 771276/07922 035204

email: info@allseasonslandscap gardening.co.uk
www.allseasonslandscap gardening.co.uk



The Pettiward Family

I was lucky enough in the Summer to meet one of the two surviving grandchildren of the last Squire, Charles Pettiward. Confusingly he is also called Charles! He is the son of Roger Pettiward who was killed at Dieppe in the 2nd World War and a very charming gentleman. We have been conversing via email for some time now. He came to Great Finborough in June and has lent me three notebooks. One of them was started in the 17th Century by John Pettiward, then living in Onehouse Hall. The other two are written by Charles Pettiward.

Many villagers remember the Squire with fondness, respect and as a benefactor of this village and the surrounding area. Sometimes stern, always fair. The notebooks show him in a different light, as a very proud father to his children: Stella, Roger, Cynthia and Daniel. There are snippets he has cut out of the newspaper and stuck into the notebook announcing their sporting achievements, a letter from school, Eton and Oxford University.

For Roger's 4th birthday, the Finborough Scouts lit a fire in the grounds of the Hall, and the little boy came out to thank them! The scouts were given tea, not with the birthday boy, but in the servant's quarters! There is also an account of Roger's 21st Birthday celebrations

held in the Pettiward Hall and attended by most of the village. There was food, entertainment and the presentation of a gold watch and cigarette case subscribed to by parishioners. All four children led a very privileged life, very different from most of the villagers. The notebook really brings them to life.

The notebooks also settle various questions about the village. For example, the mound on Devil's Hill has generated many explanations including it being a folly, an icehouse, a vent for the sewer, and even the burial place for one of the Squire's horses. The notebook gives the real reason for the structure. It was soil dredged from the River Rat that runs along the valley floor in the grounds of the hall. A then fashionable 'serpentine lake', much loved by 18th Century landscape designers, had become clogged, shallow and marshy so in 1800 it was straightened again. The waste soil was carted to the site where the mound now stands and used to partly hide the sewer vent pipe for the newly built Hall.

A newspaper cutting from EADT 1 August, 1931, and stuck into the notebook says: *'There is a hill called Devil's Hill , and there is a mound erected somewhere about 1800 by my Great Uncle Roger Pettiward – for private reasons – Partly to dispose of some superfluous soil and partly to conceal a sewage vent pipe'*. Charles Pettiward, Finborough Hall.

If people are interested, I will put snippets in the newsletter from time to time as I explore the books further. While Charles was here, he mentioned a wrought iron gate that used to stand at one of the entrances to the Hall that had the family coat of arms on them. He wondered whether they were still there and could he see them. I'm fairly sure they are no longer here but does anyone remember them? Do you know why/when they were removed? Could you let me know?

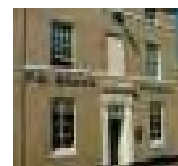
Mary Williams

New revised community transport service for Mid Suffolk

A community transport service operated by disability charity Optua has now been extended and renamed by Suffolk County Council. The new 'Suffolk Links – Gipping' service is a new Demand Responsive Transport (DRT) service which is an extended version of the previous Club 88 serving several Mid Suffolk villages with Needham Market and Stowmarket. The new service now covers the villages of Buxhall, Brettenham, Great Finborough, Little Finborough, Hitcham, Combs, Ringshall, Wattisham, Bildeston, Nedging Tye, Great Bricett, Battisford, Barking, Baylham and Somersham.

DRT services are designed to provide people living in rural areas with a way of getting out and about and link with other bus and rail links. Concessionary passes and Explore cards are valid on the Suffolk Links service which is available from 7am to 7pm, Mondays to Saturdays. The vehicle is fully accessible for disabled people but is available for anyone to use. For more information or to book the service call 01449 616000.

James Powell



F. G. BROWN – OPTICIANS
Denmark House, 41 Bury
Street, Stowmarket.
Tel: 01449 612812/674030

As independent opticians we offer a more personalised eyecare service that you can trust for all the family

Professional Eyecare – Quality Products – Personal Service

Opening hours:-Tuesday-Friday 9.00 am – 5.30 pm
Saturday 9.00 am – 5.15 pm

Your sight care is our priority

Buxhall and Great Finborough over 60's Candlestick Club

The September outing was rather poorly supported. Perhaps members, including me, thought the Autumn winds on Felixstowe beach a bit bracing. If you have ideas for a late Summer trip next year please let us know.

We are indoors from now on, with our October meeting being a small fundraiser with a Bring, Buy and Bingo afternoon. 2pm Thursday 7 October in Buxhall Village Hall. The November meeting has had to be changed to 10 November at 2pm. Pip Wright will talk about 'Round the Country on a Bus Pass'. Please put our Christmas lunch in diaries now – 2 December. If you need a lift to any of the events please let me know. New members are always welcome.

Keith Proctor

**BARGEWELL
SKIP HIRE**

- 2, 3, 4 & 6 Yard Skips
- Long or short term hire
- Delivery service 7 days a week
- Fast friendly service

Stowmarket
01449 615056
Mobile 07770 452378
High Rd, Gt Finborough, Suffolk

DIRTY OVEN ??
DOMESTIC OVEN CLEANING
By the UK's leading
oven cleaning company
OVENCLEAN
OVER 500,000 cleans
NON caustic, fresh solution every time.
Hobs, Extractors and Microwaves
Aga's and Ranges
PHONE JOHN DYER on
01359 259818 or 07835 256967
www.ovenclean.com

FHOBS Lunch Club

FHOBS is a thriving Lunch Club with about 40 members who enjoy a meal and some valued comradeship. This takes place on the last Tuesday of each month: 12 noon for 12.30pm in Buxhall Village Hall. A small charge of £3.50 is made to cover expenses. We would be delighted to welcome new members. Please contact me on 737814.

Jill



Can you order your
"cerveza, vino y
tapas?"



I can teach you!

Phone **Andrea**
on **01449 736955**

THORPE PLUMMER – ACCOUNTANTS

A small established firm offering a personal, professional service. All aspects of accountancy and taxation covered in the most cost effective way. Advice given on tax and business management for both individuals and companies with a view to maximising income and reducing the tax burden.

Contact: 01284 750938 (tel/fax)
thorpeplummer@aol.com

Could you benefit from a Health Walk?



'Stepping Out in Suffolk' is running a Health Walks programme and is looking to attract new walkers and volunteer walk leaders. Health Walks are designed for people who would like to walk in a group, following a set-out route with the guidance of walk leaders. They are great for people who want to maintain or regain fitness, meet new people,

walk in a safe environment, or who just really enjoy walking! Each walk generally lasts for around an hour and is relaxed and friendly. Walk leaders will always adjust the pace to ensure that everyone can take part.

Health Walk leaders ran a programme of walks in Mid Suffolk this Summer and feedback from participants was extremely positive. As well as the health benefits that people received from walking, many also found the walks sociable and fun. Walks begin somewhere that is accessible by public transport so that as many people as possible can take part.

Anyone can go on a Health Walk: all you need to do is fill out a short health questionnaire. The walks do not need to be booked. You can just turn up on the day. A new programme of walks for this autumn will be available soon online and in Tourist Information Centres and Suffolk Libraries.

'Stepping Out in Suffolk' wants to recruit new volunteer Health Walk leaders. All volunteers receive training accredited by Natural England. This covers all aspects of leading the walk, from basic first aid to route planning. You could become a walk leader to give your CV a welcome boost, or just to share your love of walking with others. All you need to become a walk leader is a little spare time, a lot of enthusiasm, and the desire to promote wellbeing and fitness. If you would like to go on a Health Walk or become a volunteer Walk Leader then please visit <http://www.suffolkcoastal.gov.uk/yourfreetime/steppingout/> or contact the health walks team on 01394 444501 or walks@suffolkcoastal.gov.uk

Vicky Smy

Primus Financial Solutions

Caroline Williams

A Financial Adviser specialising in Mortgages and Protection

Mortgages

- First Time Buyers
- Homemovers
- Remortgages
- Buy to Let
- Commercial Mortgages
- Capital Raising
- Debt Consolidation



"As an Independent Mortgage and Protection Adviser I am able to access the whole of the market to find the most suitable mortgage for you, and have access to a range of providers to ensure the most suitable insurance products are recommended to you. In addition, we have advisers specialising in Investment and Pension advice."

Insurance

- Life Insurance
- Critical Illness Cover
- Accident, Sickness & Unemployment
- Key Man Insurance
- Income Protection
- Buildings Insurance
- Contents Insurance

Phone: 01449 762076

Mobile: 07747 536330

Email: caroline@primussolutions.co.uk

Web: www.primussolutions.co.uk

The Financial Services Authority does not regulate most buy to let and commercial mortgages.

THINK CAREFULLY BEFORE SECURING OTHER DEBTS AGAINST YOUR HOME. YOUR HOME MAY BE REPOSSESSED IF YOU DO NOT KEEP UP REPAYMENTS ON YOUR MORTGAGE.

There will be a fee for mortgage advice of £590. Free initial consultation.

Primus Financial Solutions is an Appointed Representative of Personal Touch Financial Services Limited, which is authorised and regulated by the Financial Services Authority.

Buxhall Women's Institute

The August Speaker, Joanne Hammond, was a little surprised when she saw how many members were waiting to see her demonstration but soon got into her stride showing how to produce baskets using material garnered from the hedgerows: ivy, honeysuckle and bramble, as well as specially harvested willow. A tip she passed on was to remove thorns from bramble by passing the length of bramble through a previously punctured lid. A full size basket took her a matter of hours and some members were encouraged to try their hand.

The September walk started from Stowupland and covered three miles enjoyed by over twenty members on a balmy summers evening. This is such a good opportunity for women to feel comfortable walking off the beaten track. A meal followed at *The Retreat* - good pub grub. The sun shone on us again when we spent the day at Southwold on 4 September. After an afternoon pottering round the shops, pier or pubs - whichever was our wont - we went to the theatre to see a production of *Abigail's Party*.

We produced tea and cakes enjoyed by many at the Buxhall Village Produce Show and afterwards our meeting decided to use the funds raised to buy an item or items for the kitchen at the Hall. The Speaker on 15 September talked on 'Catering the Royal Way'. Dr Patrick Thompson covered so many topics so well that it is impossible to detail them here. Suffice to say he kept us all well entertained with stories and anecdotes concerning his career within J. Lyons and then the Royal Palaces that we were left wanting to hear more.

There is a Group Meeting at Stowupland Village Hall on 6 October where the Speaker will be Masterchef of Great Britain, David Ryan who has been to speak to us and was well received. The next meeting, on 20 October, is 'Hatch, Match and Despatch' by Jane Parker who was the Registrar at Stowmarket. This is a good time for new members to join as they get the advantage of 14 months membership for the price of 12. Doors open 7pm for a 7.30pm start. Visitors and newcomers to our village very welcome. **Anne Hicks**

WILD BIRD SEED

The next order will be placed on 8 October and will be available for collection from Abbey Farm Cottage, Buxhall Road, Great Finborough, IP14 3AU, by about 13 October.

If you would like to place an order please let me have your requirements together with a cheque to 'Great Finborough Garden Club'. It is essential that I have your telephone number so that you can be advised when seed is ready for collection. Orders may be posted to or dropped off at Abbey Farm Cottage; 1, Valley Lane; or 8, High Road, and must be received by 6 October. The next seed orders will be; December, February and April. **John Davey**

Product	Weight	Price
Wild Bird Mix	20 kg	£8.00
Finch Mix (no corn)	20 kg	£9.50
Mixed Corn	20 kg	£7.00
Peanuts (superior quality)	25 kg	£23.75
Peanuts (half sack)	12.5 kg approx	£13.50
Black Sunflower Seed	15 kg	£9.00
Sunflower Kernels	25 kg	£25.75
Sunflower Kernels (half sack)	10kg approx	£12.00
Niger Seed	25 kg	£20.50
Niger Seed (half sack)	10kg approx	£9.50
Fat Balls (any quantity)	Price each	11 pence

Great Finborough & District Garden Club

The weather this month has seen the first of those lovely Autumn mornings, crisp and clear, but with enough rain to keep the grass growing. The time has come to start the Autumn tidy up of the beds, feed those specimens remaining and plant out new treasures (perhaps those purchased at our last meeting) as well as starting to plan for next Spring.

The September meeting saw us welcome two new members to the club and, as our first speaker for the Winter season, Ben Potterton, owner of Blacksmith's Cottage nursery and Plant Director of Twycross Zoo. He gave us a wide ranging and fascinating talk on unusual plants for our gardens and on his travels. As he travels he seeks out plants to enhance the environment of the animals at the zoo by surrounding them with plants native to their areas of origin. In this way he also finds new varieties for the nursery. Our next meeting will be on 14 October. Stella Taylor will be encouraging us to grow our own vegetables and hopefully provide some tips on getting the best out of our plots.

If you are interested in joining the Garden Club or would like to join us for any event you will be very welcome. Membership is £12.50 per household per year. Non-members can attend meetings for £2 per person. For further information contact me or John Davey at john@abbeyclassics.co.uk - see Who's Who. **Judith Cameron**

Fame too!

The Club is being featured in a full page spread in the October issue of *Let's Talk*, which is now available at newsagents. Published in Suffolk and Norfolk by the East Anglian Daily Times, it describes our activities and priorities and members of the Garden Club posed for photographs. **John Davey**

Prescription fraud costs NHS Suffolk millions

People in Suffolk made £1.9 million worth of fraudulent prescription claims in the last year. Did you know it is a criminal offence to falsely claim a free prescription and could result in a fine or a court appearance. In some cases people may have made a genuine mistake. In other cases it is a deliberate attempt to avoid paying the charges. People should be aware that regular checks are made to verify the validity of claims. You can obtain free NHS prescriptions if, at the time the prescription is dispensed, you:

- are 60 or over,
- are under 16,
- are 16-18 and in full-time education,
- are pregnant or have had a baby in the previous 12 months and have a valid maternity exemption certificate (MatEx),
- have a specified medical condition and have a valid medical exemption certificate (MedEx),
- have a continuing physical disability which means you can't go out without help from another person and have a valid MedEx,
- hold a valid war pension exemption certificate and the prescription is for your accepted disability,
- or you are an NHS inpatient.

You are also entitled to free prescriptions if you or your partner (including civil partners) are named on or are entitled to an NHS tax credit exemption certificate or a valid HC2 certificate (full help with health costs), or you receive either:

- Income Support,
- Income-based Jobseeker's Allowance,
- Income-related Employment and Support Allowance, or
- Pension Credit Guarantee Credit.
- If a fraudulent claim has been made, NHS Suffolk is entitled to issue a penalty charge notice of up to five times the cost of a prescription, and persistent offenders could end up in the Small Claims Court.

Anyone who is unsure of their eligibility should check what help is available with health costs online at www.nhs.uk **Gussy Alamein**

Charity Bingo

The next session, on 21 October, will be in aid of the village school's Squirrel Garden. Start time will be 6.30pm at Pettward Hall. There will be Bingo, Raffle and Refreshments. All welcome, Children to be accompanied by an adult. Please come along and join in the fun. If you have any unwanted raffle prizes they wish to donate, please feel free to bring along on the night or contact either Mari (770032) or me.

Sharla Goldsmith

Reduce your accountancy costs

Call Sarah Place Accountants

Professional, efficient accountants

With over 15 years experience.

Accounts, bookkeeping, payroll, sage,
VAT and Tax returns

01284 747139

MOBILE HAIRDRESSING

**Cuts, Blow Dry's, Perms, Colours
And Highlights**

**For an appointment call
Julie**

07832 227 117 or 01449 616 708

Gifted and More Able Children

Did you know that every school is required to have an identified list of 'Gifted & More Able' children, or as it is known in some schools, 'Gifted & Talented'. This process is to ensure that the most able children are provided with opportunities to fulfil their potential, and to ensure that they remain stimulated and enthused in their learning. Nationally there is a concern that most able children 'coast' and do not make as much progress as they could at school. Gifted and more able identifies children in lots of different areas of the curriculum from Reading to Sport to Music.

The Primary School has a detailed process for assessing and tracking the progress of every child. Teachers carry out daily ongoing assessments during lessons to ensure they meet individual needs. The children are unaware of this monitoring. At the end of Years 2, 3 & 4 children complete national assessments (SATs). Along with Teacher Assessment this enables us to monitor how our pupils are achieving compared with national expectations for children of their age. Ongoing assessments, teacher assessments and the SATs allow us to build up a picture of child's progress and attainment. Children significantly above expectations are added to our Gifted & More Able (GAMA) list.

Children who are Gifted and More Able in every school should receive additional help to support their development and progression. It ensures they remain motivated, enthused, stimulated and challenged; enabling them to gain maximum benefit and enjoyment from their time in school.

Stephen Dodd



MG Timber Build



For all your garden structures specialising in:

Sheds / Fencing / Gazebos / Summerhouses / Decking / Raised Beds and Borders / Kennels & Hutches / Water Features / Planters / Greenhouses / Car ports / Log Stores / Seating areas

I can make any bespoke size of the above to your specification.

For a free estimate or just to discuss your ideas & requirements call:



Mark on 07921 954323



Jackbridge Cottage

Friends or family coming to stay? Need some extra space for a week? This could be the answer you are looking for.

Jackbridge Cottage is a brand new cottage available for rent, situated on the outskirts of Great Finborough in an idyllic rural location with beautiful views. Ideal for a couple, this charming cottage is well equipped, comfortably furnished and has a four star rating from the Quality in Tourism Board.

For further details or to book the cottage please contact Teresa Pemberton.

Farm Assured Beef

Grass fed hand reared beef available on your doorstep. All our cattle at Jackbridge Farm are grazed through the summer months on local pastures that are free from artificial fertilisers and sprays.

In the winter months they are fed on home produced silage and cereals. All our beef is hung to mature, to enhance its flavour, and is then traditionally butchered into convenient cuts.

The beef comes freshly frozen in a variety of pack sizes and with a variety of different cuts, such as joints, casserole beef, mince and burgers.

To place an order for beef or to find out about the holiday cottage please contact

Teresa Pemberton At Jackbridge Farm, Jacks Lane,
Great Finborough,

Tel: 01449 672177 e-mail: pembertons@jackbridgefarm.plus.com

JACKBRIDGEFARM



Combs House, Stowmarket Business Park, Needham Road, Stowmarket IP14 2AH

Tel. 01449 676966

- We have everything in house to keep your pets healthy & happy
- Including X-ray equipment
- Full modern dentistry suite
- Separate dog, cat & isolation kennels
- Full blood analysis facilities
- We also run Puppy Clinics, Weight Clinics & Old Dog & Cat Health Clinics

If there's anything you'd like to ask us, give us a call,
or better still, arrange to come and see us
& one of the team will show you round

Large FREE car park

Surgeries throughout the day by appointment
Plus a 24 hour EMERGENCY SERVICE



WWW.CEDARWOODVETS.CO.UK

CHIMNEY SWEEP

ECO SWEEP
CHIMNEY SERVICES

- NEW POWER SWEEPING METHOD USED FOR A MORE THOROUGH CHIMNEY CLEAN THAN BRUSHES.
- INDUSTRIAL HEPA FILTERED VACUUM.
- FULLY INSURED.
- INSURANCE RECOGNIZED CERTIFICATES ISSUED.
- SPOTLESS, RELIABLE AND FRIENDLY SERVICE.
- ALL CHIMNEYS, WOOD BURNERS, AGA, BOILER FLUES SWEEP.
- GUILD OF MASTER SWEEPS CERTIFICATED MEMBER.

TEL. 01359 232335

SAFEHANDS

Your Local Painters & Decorators

Interior & Exterior

All Aspects of Work Undertaken -

From Surface Preparation / Repairs to Final High Quality Finish

For Advice & Free Quotation

01449 736283
07934 705726

yoursafehands@googlemail.com



Simon Woods
Property Maintenance

T: 01449 737268 M: 07900 908846
Sorrel House, Chapel Close, Buxhall,
STOWMARKET, Suffolk, IP14 3RY
E-mail: simonwoods@live.com

- **Building Work & Project Management**
- **Kitchen Fitting**
- **Bathroom Fitting**
- **Bespoke Joinery**
- **Painting & Decorating**
- **Plumbing & Tiling**

"Friendly, reliable service from professional craftsmen"

Andrew Bingham
INDEPENDENT FUNERAL SERVICE

Stowmarkets Independent Family Funeral Service

24 Hour Personal Service • Private Chapel of Rest • FREE Parking

 Telephone: **01449 771666** 
www.andrewbingham.co.uk

17 Charles Industrial Estate, Stowmarket, Suffolk IP14 5AH

Golden Charter
Funeral Plans 

WOLF news from Edinburgh!

The show that began by the stream in Great Finborough in 2009 has recently completed a highly successful run at the Edinburgh Festival Fringe. More than a thousand people saw the show in a venue known as The Caves—a dark, dank and atmospheric space that made a perfect location for the wolf pack's adventures. With a host of 5 and 4 star reviews the show is now set to tour to other areas of the UK in 2011. Some of you saw it here first! To keep in touch with WOLF activities please see www.authenticartist.co.uk/wolf **Kath Burlinson**

Wheelchair Walks and More

A new guide to walks in Suffolk which are accessible for wheelchair users and other disabled people is being planned by Optua with Healthy Ambitions Suffolk. We would like to hear from disabled people about their favourite walk in Suffolk, whether it is a short riverside walk or something more challenging. Each walk will be checked for accessibility, including its suitability for people with sensory impairments, so we are also keen to hear from disabled people willing to check out each walk and write up a description. To suggest an accessible 'wheelchair walk' or offer to be a volunteer to test a walk, please contact me on 01473 836746 or email feedback@optua.org.uk

Healthy Ambitions Suffolk is a partnership project that includes NHS Suffolk, Suffolk County Council, NHS Great Yarmouth and Waveney and Stepping out in Suffolk. All the leading public services, and many other voluntary organisations and businesses in Suffolk have set a goal to make Suffolk the healthiest county by 2028. This means the people in Suffolk will live longer with fewer health problems. It means putting an end to increasing rates of illness, such as diabetes, heart and chest problems, and other diseases caused by unhealthy lifestyles.

James Powell

Golf Club Reservoir

Work is underway to construct the reservoir that will enable the Golf Club to water its greens without reliance on drawing water from the river and the cost that entails. If you have not seen the work taking place in the field behind the Church take a look. The Parish Council wrote to the Golf Club expressing the concern of some residents regarding the tree planting scheme. The Golf Club has responded explaining that the hedge running down the field from the Church replaces a hedge that was there over a hundred years ago.

It states that care has been taken not to obscure the view from the Church over the vale by the planting of shrubs not trees, and that the hedge will be maintained at about four feet in places to achieve this. Furthermore the boundary hedge is to the specification of the Council's Planning Consent for the change of use of the land from arable crop to golf. If you would like to see the letter Giles Hill, Neil Watt (at Odd Corner) and me have copies.

Sally Gooch

TOMLINSON GROUNDCARE

Sales • Service • Parts • Repairs

Lawnmowers walk behind & Ride-on
Compact Tractors 18 to 100 hp
Gator Utility Vehicles
Paddock Maintenance Equipment
Clothing • Merchandise • Toys
Chainsaws • Hedge-cutters • Strimmers
Harrows • Rollers • Sprayers • Trailers
Agricultural Parts • New & Used Stock

Fully equipped workshop & service vans

John Deere Mowers
From £ 200-00 inc vat

**The One
Stop
Garden
Machinery
Shop**



Tel 01449 736060

www.tomlinsongroundcare.co.uk

1 Brettenham Rd, Buxhall
Stowmarket, Suffolk, IP14 3DL

Mon—Fri 7.30am Till 5.00pm
Sat 7.30am Till 12.30pm

Demonstrations : On site
or at customers premises



Haughley Hoofers Ladies North West Clog Dancers

Haughley Hoofers begin our new practice season in October. We are always looking for new members, so if you have always liked to dance and have a sense of rhythm please come along to find out what we are all about. We meet in Haughley Village Hall on Sunday evenings at 7.30 pm. We practice through the Winter to prepare ourselves for the busy social events of the Summer when we dance at fetes, schools, pubs and places of interest. Musicians who are willing to practice with us in the Winter months and join in with our activities in the Summer months are also welcome. Please come along to the hall one Sunday evening, or, if you wish to chat with a member first please contact me on 676083.



Sharon

CHURCH EVENTS IN OCTOBER



St Andrew's Dedication Service

Canon Michael Hampel from the Cathedral will preach on Sunday 3 October 10.30am. As well as having a splendid singing voice, he delivers a cracking sermon. Come and enjoy. Service followed by wine and nibbles.

Ladies' Lunch

The next lunch will be on Thursday 7 October in the Church Room at 12.15pm. The speaker will be Meg Clibbon, a local author of children's books illustrated by her daughter. We hope Meg will bring some books with her to sell after she has told us about the process of going in to print. We look forward to welcoming you who have come before and new people who are interested in trying what is a very sociable gathering over a light lunch. There is a collection to cover the cost of the lunch. Why not bring a friend? So that there is sufficient food could you let me know by 5 October. I'm on 676123 or email me at arleron@aol.com

Arlene

ST ANDREW'S AUTUMN SUPPER

SATURDAY 16 OCTOBER -
6.30PM

PETTIWARD HALL

£8 ADULTS. £4 CHILDREN
UNDER 12

Coffee and soft drinks included
Please bring your own drinks if
required

Proceeds in aid of church funds



From the Registers

Blake Grant Richards and Charlotte Jayne Fosker
Marriage
St Mary, Buxhall 30 July 2010



Stuart Mizon and Emma Brice
Marriage
St Andrew, Great Finborough 17 July 2010

Skylarks Children's Club

The next sessions are on 14 October: 4.30-6pm in Onehouse Church Room. Any child aged between 5 and 9 years living or worshipping in Onehouse, Harleston, Shelland, Great Finborough or Buxhall who would like to join Skylarks, please contact me on 736487.

Christine Hagger

East Anglian Air Ambulances

Thanks for all your contributions of stamps, ink cartridges, mobile phones & coins over recent months. We have a considerable amount to be collected in the near future. Please keep collecting these items and passing them on to me to raise money for the East Anglian Air Ambulances.

Derek Ames

Pop in for Coffee is Changing...

St Andrew's Church would like to invite you to a coffee morning on the first Saturday of every month. There will be an opportunity to purchase homemade produce, books and see how well our volunteers have done in the churchyard. Saturday 2 October 10am-Noon

Rachel Bergstrom

LAND ARMY DESIGNS

Garden design and build

Call Jane Hamblin

01359 231344

jane@landarmydesigns.co.uk

For an instant garden try "Bed in a Box"

www.bedinabox.net

CHURCH SERVICES IN THE BENEFICE FOR OCTOBER

Weekday Morning Prayer

Monday	Onehouse	8 – 8.30am
Friday	Great Finborough	8 – 8.30am

Sunday 3 October

Patronal Eucharist	Finborough	10.30am
Harvest Festival	Harleston	6.30pm

Eighteenth Sunday of Trinity

Sunday 10 October

Matins	Buxhall	9.30am
Holy Communion (2)	Shelland	9.30am
Holy Communion (1)	Harleston	9.30am
Harvest Family Service	Onehouse church	11am
Evening Service	Finborough	6.00pm

Nineteenth Sunday of Trinity

Sunday 17 October

Family Service with pets	Buxhall	9.30am
Matins	Shelland	9.30am
Holy Communion (1)	Finborough	11am
Family Communion (1)	Onehouse Church	11am

Twentieth Sunday of Trinity

Sunday 24 October

Holy Communion (2)	Buxhall	9.30am
Holy Communion (2)	Harleston	9.30am
Time2Worship	Finborough	11am
Holy Communion (1)	Onehouse Church	11am

Last after Trinity

Sunday 31 October

Benefice Eucharist	Onehouse	10.30am
--------------------	----------	---------

All Saints Day

Tuesday 2 November

Commemoration of the faithful departed	Buxhall	7.30pm
--	---------	--------

All Souls Day

Whether you are a regular worshipper or visiting this Sunday you will find a warm welcome at any of our services

WHO'S WHO IN GREAT FINBOROUGH

Clerk, Parish Council	Giles Hill	740272
	lsdp@btinternet.com	
District Councillor	John Matthissen	771742
	3 Wash Lane Corner, Great Finborough, IP14 3BJ	
	john.matthissen@midsuffolk.gov.uk	
County Councillor	Penny Otton	737870
	penny.otton@councillors.suffolccc.gov.uk	
Newsletter Editor	Sally Gooch	677940
	sally.gooch@btinternet.com	
Church Warden	Lesley Cass	675970
Church Warden	Brenda Grimaldi	612440
Great Finborough & Buxhall Under 5s	Delia Prior	07708
		362697
Great Finborough & Buxhall Brownies	Gail Jarrett	674538
Chair, Team Finborough (Youth Club)	Joe Ball	
	josephball@hotmail.co.uk	
Charity Bingo	Sharla Goldsmith	678480
Candlestick Club	Keith Proctor	736598
Great Finborough & District Garden Club	Judith Cameron	672978
	ianandjudy@btinternet.com	
Royal British Legion	Charles Freeman	01728
		684819
Neighbourhood Watch Co-ordinator	John Davey	674401
Post Office & Village Shop	Nigel & Jeannette Edwards	612274
Head, Great Finborough Primary School	Stephen Dodd	613208
	headteacher@greatfinborough.suffolk.sch.uk	
Chair of Governors, Primary School	Nigel Brown	675344
Police (Elmswell)	PCSO Sian Uttley	01473 613
		5000
Combs Middle School (674666)	Stowmarket High School (613541)	
Stowmarket Health Centre		776000
Combs Ford Surgery		678333
Stowmarket Library		613143

Pettward Hall Bookings

676249

Village website: www.great-finborough.co.uk

Primary School website: www.greatfinborough.suffolk.sch.uk