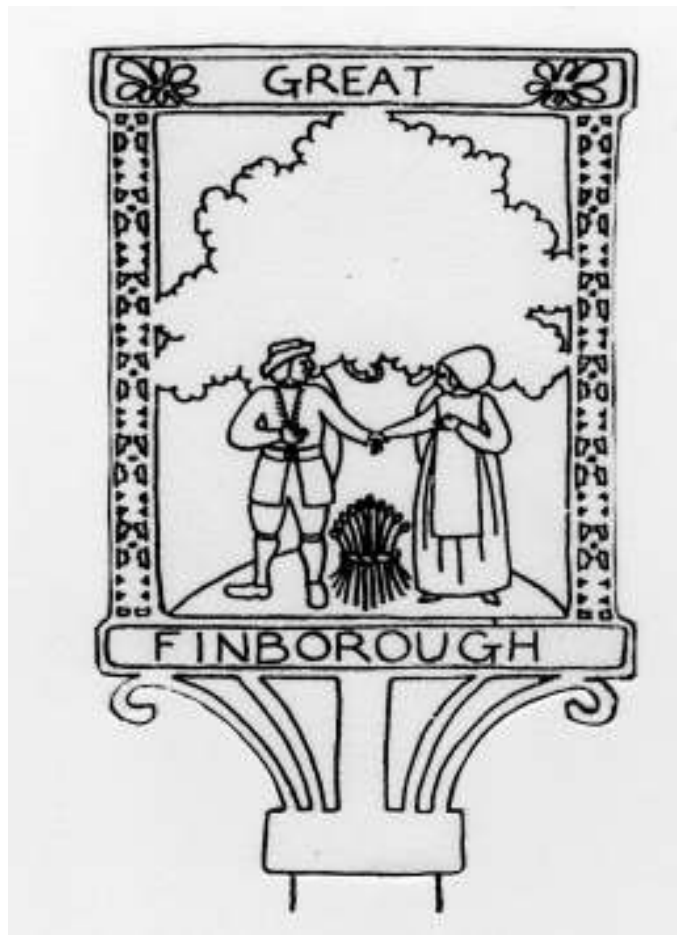


GREAT FINBOROUGH NEWSLETTER



**FEBRUARY 2011
ISSUE 415**

VILLAGE DIARY – FEBRUARY 2011

3	7pm	Youth Club, Pettiward Hall
7	6pm	Brownies, Primary School
10	4.30pm	Skylarks, Onehouse Church Room
10	7.30pm	Garden Club meeting, Pettiward Hall
10	7pm	Youth Club, Pettiward Hall
13	2.30	Onehouse Ramblers
14	6pm	Brownies, Primary School
16	7pm	Women's Institute, Buxhall Village Hall
18	7.30pm	Quiz Night, Onehouse Church Room
22	12.30pm	FHOBS lunch, Buxhall Village Hall
24	7pm	Youth Club, Pettiward Hall
28	6pm	Brownies, Primary School

VILLAGE DIARY – MARCH 2011

4	2.15pm	Women's World Day of Prayer Service, Buxhall Church
10	4.30pm	Skylarks, Onehouse Church Room

The Newsletter is produced by Great Finborough Parish Council, printed by Gipping Press, and distributed to all households in the village free of charge

Editorial

Thank you, Judith Hickman, for seven years of frustration and fun with your Christmas Quiz! Personally I've never worked out enough clues to risk submitting it for marking but it has given us much fun every year over the holidays. Wouldn't it be good if someone set us a new challenge next Winter?

If you know someone newly arrived and living in the village, or neighbours moving on, please let me know. 15 February is the copy deadline for material for the March 2011 edition. Please put 'newsletter' in the header if you are emailing. Norman and I welcome visitors so if you need to contact me 'phone, email or call in to Park Cottage any time. The kettle is always on.

Sally Gooch

NEWS FROM YOUR PARISH COUNCIL

New Parish Councillor

The Parish Council welcomes Robin Fisher who was co-opted to the vacant Parish Councillor arising from Mark Brewster's resignation. The Parish Council would like to take the opportunity to thank Mark for his continuing hard work and involvement in community projects.

Allotments

The Parish Council has exhausted all possibilities in sourcing a suitable area of land through mutual agreement with local landowners and has decided to progress the matter through compulsory purchase or compulsory lease.

Parish Clerk Vacancy

The Parish Council is seeking an enthusiastic person, with an interest in the local community to become the new Parish Clerk. The role involves implementing the decisions of the Parish Council, administering meetings, and basic financial administration. This is a part-time post with a salary in accordance with the NJC scale, taking into account experience and qualifications. Training can be provided. If you are interested in the post, please contact me - see Who's Who. Closing date: 15 February 2011.

Giles Hill, Parish Clerk

News from your District Councillor

Planning Applications

If you are considering some work which you suspect may require planning permission, please contact the Mid Suffolk Planning Department to check. Please call 01449 724611 or call in at Needham Market offices between 9am and 4.45pm.

It is usually helpful if some consultation takes place before an application is submitted. This is formalised as *pre-application discussion*. Typically this will take place on site, and involve the applicant, a planning officer, a representative of the parish council and the local district councillor. The applicant's agent or architect may attend, and specialist MSDC planners where a listed building or important trees are affected. It frequently resolves contentious issues in ways that satisfy all concerned, and makes it more likely that applications will be approved, although the right to object remains for parishes, residents and planners alike.

The proposed merger of Mid Suffolk with Babergh District Council is still moving forward with recruitment underway for a single shared Chief Executive. I can reassure council tax payers that the salary will be far more modest than that which has aroused so much resentment locally.

New Year's Day Walk

The New Year's Day walk was unfortunately rained off this year but I hope we shall keep this generally enjoyable initiative going.

Census

The ten-yearly national census takes place on 27 March and the results will inform Government when it is distributing its ever-reducing grants to our local councils – so please complete the forms and include everybody.

John Peel Centre

A big thank you to everyone who phoned in their votes to help the John Peel Centre for Creative Arts win £50,000 from The People's Millions Lottery Fund. Development work will soon be going ahead and

efforts continue to raise further substantial sums to complete this exciting project. More events in the centre are planned for this year. I hope to see lots of local people performing and attending. Promotional T-shirts are available for £10 at the Tourist Information Centre opposite Asda, with all proceeds going to support this venture.

To get in touch about anything, call me, email me or write me a letter.
See Who's Who.
John Matthissen

A Chance to do our Bit against Cuts to Local Services

You may be aware of the "We didn't vote for this!" campaign launched towards the end of 2010 in response to the plans to cut our local services including libraries and buses, and to close vital resources for vulnerable groups such as residential homes and services for young people.

As part of this campaign, a postcard has been produced with the aim of delivering this to as many households as possible within Suffolk over the next couple of months. The card includes a petition for Suffolk residents to sign, stating our objection to the cuts and asking our elected representatives to refuse to support these plans.

This is a lot of postcards through a lot of doors! If you would like/are able to help by delivering in any of our local villages (Onehouse, Great Finborough, Buxhall, Harleston or Shelland), then you're welcome to contact me directly on 771742 or at jen.overett@btinternet.com, and I can make arrangements for the postcards to be delivered to your home. Alternatively, please contact Unison at www.suffolkunison.co.uk, and encourage your friends and relatives living elsewhere within Suffolk to do the same. Many thanks.

Jenny Overett

2010 Number Quiz

There were 5 entries with correct answers in the 2010 Quiz. As in previous years as long as the answer was logical it was allowed. Congratulations to the overall winners, Mim and Keith Proctor. In all 33 entries were returned and the winner for the Spot Prize for a bottle of wine was Anne Hicks.

A very big thank you to those who sold Quiz Sheets, including Nigel and Jeanette in the village shop, to everyone who took part, and for all the favourable comments. In total £193 was raised for St Mary's Church Fabric Fund.

I've enjoyed setting the Number Quiz over the last 7 years and been intrigued by some of the answers that have been given but as they say 'all good things must come to an end'. That was my last quiz. It's wonderful to know that between us £1,295 has been raised overall for St Mary's. Thank you everyone and may you enjoy a non head-scratching December 2011!

Judith Hickman



All general plumbing work carried out
Maintenance, repairs and improvements
Oil boilers serviced, fitted and repaired
Oftec registered

Jim Prior
1 Oak Close, Great Finborough,
Stowmarket
Tel 01449 675096
Mobile 07917 605699



Community WildSpace

The Parish Council received a progress report from the group of villagers who want to manage the woodland behind Pear Tree Place and the adjoining open green spaces (left behind by the Gipping Homes housing scheme) collectively as a conservation area. This WildSpace would be available for villagers to use for recreation, community events and wildlife for this and future generations. The name chosen for the group is 'The Woodpecker Hill Steering Group' - from the Saxon name for our village, 'fin' meaning 'woodpecker'.

The Steering Group have affiliated to Green Light Trust (GLT) of Lawshall. GLT is helping the group to be set up properly, agreeing a constitution and signing up to GLT's Code of Good Practice. Officers elected for the group are:

- Chair - Rhodri Gardner
- Secretary - Rob Nurton
- Treasurer - Sam Bailey
- School's Link - Lisa Gilson
- Vice Chair - Rodney Self

Recent contact with the Primary School has been very positive to encourage the children in the idea of WildSpaces. A school assembly will introduce the project and start a competition to design the group's logo. On 16 March at 2.45pm there will be an inaugural celebration at the school with the planting of a tree and a time capsule. It is also hoped to construct a tree nursery at the school for the children to propagate plants, grow on trees and shrubs, and eventually plant them out on sites to be agreed in the village.

It will not be long before Spring is here with nature waking up to show its hand and for us to appreciate our surroundings in all their glory. We are still looking for additional committed volunteers to help on the Steering Group so if you have missed out on earlier meetings give me a call on 771462 for further information.

Rodney Self

IDM Training Services

PUTTING SAFETY FIRST

Do you, or your employees, require Training in Health, Safety related matters? IDM Training Services can deliver a variety of cost effective courses at your premises covering the following subjects:

Forklift Trucks (CITB, RTITB and In-House)

Risk Assessments (CIEH Level 2/3)

Manual Handling (CIEH Level 2)

Health and Safety in the Workplace (CIEH Level 2/3)

Health and Safety Awareness

Abrasive Wheels

Working at Height

Toolbox Talks

Asbestos Awareness

Banksman, Vehicle Marshalling

Pollution Prevention and Spill Response

Training Skills and Practice

Bespoke Training and Consultancy Available

Enquiries also being taken for

IOSH Managing Safely Courses,

CIEH Level 3 Award Preparing to Teach in the

Lifelong Sector (PTLLS)

CIEH Level 3 Award Training Skills and Practice

IDM Training Services

~~Essex~~ ~~Essex~~ High Road, Great Finborough, Suffolk, IP14 3AQ.

Tel: 01449 613699 Mob: 07967 566 180 Email: isain@idmtraining.co.uk

Ruby and Her Horses

On Saturday 12 February, the Rotary Club of Stowmarket Gipping Valley will host an evening with the Bumpstead Boys presenting 'Tales of Ruby and her Horses' at Needham Market Community Centre, School Street, Needham Market. This is a true life narrative told by Neil Lanham from stories that were told to him by his mother, Ruby. In the show the audience will be drawn back to the period just before the First World War and then through the agricultural depression of the 1930s. It was, Ruby said, a time when "If you hadn't got anything you were lucky because you hadn't got the worry of it. For sure as eggs are eggs you'd lose it". The narrative is supported by a PowerPoint presentation of Ruby's own photographs, digitally enhanced for the big screen. Each story is followed by an unaccompanied song from Andrew Stannard in his nut brown East Suffolk voice. Everything you hear will come straight out of the oral tradition; nothing having been taken from books.

The Performance will start at 7pm. A Raffle will be held during the evening for a chance to win a 'Barrow of Booze'. Tickets at £5 per head are available now by either telephoning 08081 081 333 (Freephone) or from The Museum of East Anglian Life shop, The Stowmarket Tourist Information Centre or Needham Market's Council Offices. All proceeds from this entertaining evening will be donated to East Anglia's Children's Hospices Treehouse Appeal.

Guy Wiltshear

The Mill House Cattery

Family run business - Open all year

For bookings or further information

Please call: Mark or Lisa Gilson 01449 674853

Or visit our website:

www.themillhousecattery.co.uk

The Mill House, Valley Lane, Gt. Finborough

GREAT DRAMA THIS SPRING AT THE THEATRE ROYAL

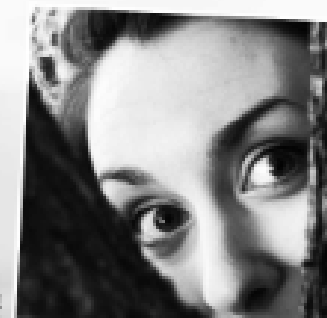


Thursday 10 – Saturday 26 February

A Theatre Royal Bury St Edmunds Production

MUCH ADO ABOUT NOTHING

by William Shakespeare Sponsored by GREENE & GREENE



Thursday 10 – Saturday 19 March

A Theatre Royal Bury St Edmunds Production

Dangerous Corner

by J B Priestley

'productions like this make you want to come back to the theatre again and again'

Audience Member on *Twelfth Night* 2009



Join our e-newsletter today and win a fantastic mini-break to London with **superbreak**

All you need to do to be entered in to our prize draw, to win a mini-break including hotel and theatre tickets, is email marketing@theatroyal.org with the heading **Superbreak** and your contact details. Alternatively, if you don't have an email address please send your postal details to **Superbreak Competition**, Marketing, Theatre Royal, 6 Westgate Street, Bury St Edmunds IP33 1QR. The deadline for entries is Tuesday 1 March.

Book online at www.theatroyal.org
or call the Box Office on 01284 769505

Join us on

12%

18+

U24 (U15 – Under 25 get on the door, on the day for just £5)
Under 11 Seater - Special rate of £4.50, bookable in advance, for anyone under 11





And Sew On...

“For all your sewing repairs and alterations”

E.g. hems, seams, reducing/lengthening garments, soft furnishings.

I also sew in name labels for school uniforms £10 - full set of uniform.

I am always happy to help! Mrs Lizzy Johnson 01449 737414 (Buxhall).

The Afternoon of Festive Food

I would like to thank everyone who donated food, raffle prizes or helped out on the day. Thanks also to the Buxhall Handbell team who provided the entertainment and Bernie Brand for bringing along the lovely jewellery made by her daughter (www.highlandblingcrafts.co.uk). More importantly a special thanks to all of you who came along and supported this event which, as a result of your generosity, has meant that the EACH Treehouse Appeal has benefitted by another £384.

John Davey

PHILIP CHAPMAN

Block paving, Patios, Paths, Driveways, Fencing
Small building work
Mini digger and driver hire

Free Estimates
Prompt Service

All work carried out to the highest standard

Please call Phil on: 01449 777088 or 07891 777459

Michael Green from Buxhall

Michael is likely to be in the area for at least the next 2 months. We are hoping to arrange some get-togethers, at which Michael would speak and answer questions about the work he has been doing as a disabilities nurse in Jordan over the past few years, and so much more. Advertising will be done through the 5 churches of the Benefice, so watch out for posters and contact your church wardens if you are interested in attending.

Derek Ames

Time to Replace Your Boiler with the Latest Eco-Technology?

A micro-renewable energy solution based on
your needs can reduce your running costs

Ground & Air Source Heat Pumps

Heat Recovery Ventilation • Solar PV

Solar Thermal • Wood-Burning Stoves

Wood & Pellet Boilers

Grants Available – MCS Accredited

t. 01449 737 494 w. www.ecolivinguk.com

ecoliving®
micro-renewable solutions for a sustainable future



TRM Web Design

website design -
website hosting -
database integrated
sites

search engine
optimisation – virtual
reality panoramas
online video –
multimedia cd-rom
production
flash/shockwave
media

www.todd.co.uk

01473 89099 / 07876

024214

trm@todd.co.uk

Websites for small businesses organisations and clubs

Getting a website is cheaper
and easier than ever - you'll be
up and running in no time.

- Attract more customers
- Advertise your services
- Sell your products online
24hrs a day



For help and professional advice telephone

01449 766612

THE BUXHALL CROWN

Open 7 days a week
(drinks only Sunday
evenings)

Full a la carte menu. Or
2 courses for £10.

See our website:
www.thebuxhallcrown.co.uk
or ring Barry and Adam
on: 01449 736 521



Charisma Hair

86a Forest Road – Onehouse
01449 677202

- Qualified and friendly staff
- Ear piercing
- Nail Technician
- Full range of styling and colouring and techniques
- Indola products for all your hair and care needs (Retail sizes available)

(Closed all day Mondays)



Dennis Green

CARPETS AND FLOORING

(01449) 774770

Dennis: 07879485215 Andrew: 07502121938

Supplier of a Wide range of Carpets Vinyl Tiles Laminate
and Wood Flooring

NICF Master fitter- Eastern England overall flooring
champion and carpet fitter of the year finalist

'For Personal service and all year competitive pricing why not give Dennis and Andrew the opportunity to quote for your flooring needs'

*'Home choose- We will bring our shop to you'
Ring for an appointment*

Unit6b The Barn Glebe Farm Onehouse Stowmarket Suffolk IP 14 3HL

News From The Primary School

In Green Class (Reception) the topic this term is 'pets'. We have had different animals visiting us at school and we are making a rabbit hutch. Our 'wellie walks' have restarted too. In Red Class our topic is 'Weird, Wacky and Wonderful! Spike Milligan's poem "On The Ning Nang Nong" led on to identifying rhymes and nonsense words. We intend writing our own poem on this theme; maybe even putting some music to it. We have been thinking about inventions and creating our own electrical circuits in our inventions room. We will also be looking at materials, their uses and properties.

In art, we have been investigating what happens when we mix colours. Later we will be looking at works by famous artists including cubism by Picasso and photography by David Hockney. We will investigate some of the wonders of our world, using research skills to establish their location and in some cases how they came to exist. Cooking features again this half term, with some weird and wacky cake decorations, pizza toppings and so on. Number work as always will feature strongly this term.

Purple Class is working on the topic of 'Fire and Ice', concentrating on science skills and knowledge. We have discussed planets, the Polar Regions, heating systems, changing material properties by heating and cooling, and ice sports. Accepted to perform at Snape Maltings, the performance will include all children in Years 3 & 4. Our performance is entitled 'Shining Like the Stars!' Preparing for our performance includes costume design, sewing skills, dance choreography, prop design and construction, rhythmic gymnastics and practice sessions.

Years 3 & 4 children have weekly swimming lessons. They are learning to play the flute. Year 4 is engaged in 'Forest School' sessions. The 'Big Write' is helping children reach the standards required in writing across the curriculum. They have obviously enjoyed the 'talk homework', coming to school with lots of ideas to share. The quality of their writing has been absolutely fantastic.

Class Teachers, Primary School

News from Great Finborough Football Team

Unfortunately a few matches and training sessions were cancelled pre-Christmas due to inclement weather. With the New Year underway, the Year 3 and 4 children who play for Great Finborough in the primary school league are working hard to become match fit once more. The next home match is on Saturday 5 March. Kick off is at 10am on the back field at the primary school and refreshments will be available. The children would very much appreciate the support of the village, as they are extremely proud of their achievements. We look forward to seeing you there!

Lisa Gilson

The John Peel Centre for Creative Arts Won!!

A huge thank you to everyone who has supported us during this campaign! We are really excited and encouraged by the result, particularly because the winner was chosen by you, the public. Work has already commenced on the building and further work will happen during next year. You can keep in touch with the project via Facebook, Twitter and our website:

<http://www.johnpeelcentreforcreativearts.co.uk/>

Zoey Furzer

News from the Friends of Great Finborough Primary School

Beetle Drive

We are organizing a beetle drive on 11 March 2011 at the primary school from 6pm to 8pm. This event is always a lot of fun for all the family. There will be refreshments. So please come along on the night and help us raise money for the Friends. Tickets for adults are £1; children 50pence. Pay on the night.

A big thank you to all those who supported us at our Christmas bazaar. We raised a fantastic £400. Another big thank you to all those who ordered through the Webb Ivory catalogue; we raised £43.95. With the money we have raised the Friends have bought are new library books, a new sign for the entrance of the school, two gazebos for the friends and school future events, and more. Without your help we would not have achieved it. So a really big thank you to you all again.

Unwanted gifts

We are always looking and relying on donations of raffle prizes and items to help us with our fundraising. We would be happy to take any of those unwanted Christmas gifts off your hands. If anyone has any donations please drop them off at the primary school or speak to a member of the Friends.

Easy Search Website

If you are an Internet Shopper why not help the Friends raise funds by using the free website www.easyfundraising.org.uk and follow the links. Over 400 retailers can be accessed from this site and up to 15% from each online purchase will be donated to the friends. By September 2010 we had raised a fantastic £107.50. Thank you to everyone who use this and please continue to do so.

Sharla Goldsmith



**BARGEWELL
SKIP HIRE**

2, 3, 4 & 6 Yard Skips

- Long or short term hire
- Delivery service 7 days a week
- Fast friendly service

Stowmarket
01449 615056
Mobile 07770 452378
High Rd, Gt Finborough, Suffolk



**ALL SEASONS
LANDSCAPE GARDENING**

• Garden Landscaping • Turf Laying •
• Paths & Patios • Garden Maintenance •
• Hedge Cutting • Fencing •
• Specialise in low maintenance gardens •

Reliable family business Fully Insured & Guaranteed

For FREE estimates and more information on our service call **Simon** on
01449 771276/07922 035204
email: info@allseasonslandscapegardening.co.uk
www.allseasonslandscapegardening.co.uk




DIRTY OVEN ??

DOMESTIC OVEN CLEANING
By the UK's leading
oven cleaning company


OVENCLEAN

OVER 500,000 cleans
NON caustic, fresh solution every time.
Hobs, Extractors and Microwaves
Aga's and Ranges

PHONE JOHN DYER on
01359 259818 or 07835 256967
www.ovenclean.com



Can you order your
"cerveza, vino y
tapas?"



I can teach you!

Phone **Andrea**
on **01449 736955**

FHOBS Lunch Club
FHOBS is a thriving
Lunch Club with about
40 members who enjoy
a meal and some valued
comradeship. This takes
place on the last
Tuesday of each month:
12 noon for 12.30pm in
Buxhall Village Hall. A
small charge of £3.50 is
made to cover
expenses. We would be
delighted to welcome
new members. Please
contact me on 737814.
Jill

**THORPE PLUMMER –
ACCOUNTANTS**

A small established firm offering
a personal, professional service.
All aspects of accountancy and
taxation covered in the most
cost effective way. Advice given
on tax and business
management for both individuals
and companies with a view to
maximising income and
reducing the tax burden.

Contact: 01284 750938 (tel/fax)
thorpeplummer@aol.com

Primus Financial Solutions

Caroline Williams
A Financial Adviser specialising in Mortgages and Protection

Mortgages

- First Time Buyers
- Homemovers
- Remortgages
- Buy to Let
- Commercial Mortgages
- Capital Raising
- Debt Consolidation



Insurance

- Life Insurance
- Critical Illness Cover
- Accident, Sickness & Unemployment
- Key Man Insurance
- Income Protection
- Buildings Insurance
- Contents Insurance

"As an Independent Mortgage and Protection Adviser I am able to access the whole of the market to find the most suitable mortgage for you, and have access to a range of providers to ensure the most suitable insurance products are recommended to you. In addition, we have advisers specialising in Investment and Pension advice."

Phone: 01449 762076
Mobile: 07747 536330
Email: caroline@primussolutions.co.uk
Web: www.primussolutions.co.uk

The Financial Services Authority does not regulate most buy to let and commercial mortgages.
THINK CAREFULLY BEFORE SECURING OTHER DEBTS AGAINST YOUR HOME. YOUR HOME MAY BE REPOSSESSED IF YOU DO NOT KEEP UP REPAYMENTS ON YOUR MORTGAGE.
There will be a fee for mortgage advice of £590. Free initial consultation.
Primus Financial Solutions is an Appointed Representative of Personal Touch Financial Services Limited, which is authorised and regulated by the Financial Services Authority.



Buxhall Women's Institute

During the Summer months on the first Wednesday of each month many of our members meet at different local pubs where Anne and her faithful team lead us across country (well along the footpaths anyway) for a 3-4 mile ramble. We then enjoy a pre-booked meal and tippie at the said public house to replace any calories we may have accidentally burned off! During the Winter months these outings are greatly missed by all, so Anne arranges a Christmas meal for us on the first Wednesday in December. This year we were wonderfully looked after by the staff at The Coach House, Thornham, who provided a super meal with great service and made the whole evening a real success. Thank you Anne and friends for another great evening.

Unfortunately our usual December meeting in the Village Hall had to be cancelled due to the extremely inclement weather. This was a hard decision to make, as we all greatly enjoy the wonderful food laid on by the committee at Christmas and we had been looking forward to a visit from the Buxhall Choir and the hand bell ringers.

Meetings are usually held in Buxhall Village Hall on the 3rd Wednesday of the month. The next is on 16 February. We hope to be entertained and informed by our speaker Annya Stoddart who is going to introduce us to acupuncture. Doors open at 7pm for a 7.30pm start. Visitors and newcomers to our villages very welcome.

Helen Matthews

Quiz Evening

Friday 18 February at 7.30pm in the Church Room, Onehouse. Not your usual quiz in that there will be seven rounds, each of twelve questions. All general knowledge or pot luck, so no jokers this time. Teams of up to five may enter at £1.50 per head with a prize for the winning team and a wooden spoon for the team who prop up the rest. There will also be a raffle. We are limited by space to a maximum of 12 teams so please let Gloria (676198), Ron (676123) or Carole (736025) know as early as possible that you will be taking part. Look forward to seeing you.

Arlene Cruickshanks

SAFE HANDS

Your Local
Painters & Decorators

A creative Outlook

Trusting
Traditional Values

01449 736283

07842 515806

yoursafehands@gmail.com

EAST ANGLIA

POTATO DAY

SATURDAY

12TH FEBRUARY 2011

STONHAM BARN

Stonham Aspal, Stowmarket, Suffolk, IP14 6AT
(on A1120, just east of junction with A140, follow brown tourist signs)

9.30am to 1.30pm - Admission £1.50

**100+ VARIETIES OF SEED POTATO, 30% ORGANIC
BOOKS - TOOLS - SEEDS - PRODUCE - CHIP TASTING
SEEDSWAP (Bring seeds to swap) - REFRESHMENTS**

website: www.eapd.btck.com

WILD BIRD SEED

The next order will be placed on 11 February and will be available for collection from Abbey Farm Cottage, Buxhall Road, Great Finborough, IP14 3AU, by about 16 February.

If you would like to place an order please let me have your requirements together with a cheque to 'Great Finborough Garden Club'. It is essential that I have your telephone number to advise you when seed is ready for collection. Orders may be posted to, or dropped off at, Abbey Farm Cottage; 1, Valley Lane; or 8, High Road, and must be received by 9 February. The next seed orders will be; December, February and April. Unfortunately there have been some hefty increases in the wholesale price of seed since November but my current research shows these prices are still competitive.

John Davey

Product	Weight	Price
Wild Bird Mix	20 kg	£9.00
Wild Bird Mix (premium)	20 kg	£11.00
Wild Bird Mix (no corn)	20 kg	£12.50
Finch Mix	20 kg	£11.00
Mixed Corn	20 kg	£8.00
Peanuts (superior quality)	25 kg	£28.75
Peanuts (half sack)	12.5 kg approx	£15.50
Black Sunflower Seed	15 kg	£11.00
Sunflower Kernels	25 kg	£29.50
Sunflower Kernels (half sack)	10kg approx	£13.50
Wild Bird Mix (no mess)	15 kg	£13.50
Niger Seed	25 kg	£21.50
Niger Seed (half sack)	10kg approx	£10.00
Fat Balls (any quantity)	Price each	11 pence

Great Finborough & District Garden Club

The past Garden Club year has been busy, both horticulturally and socially. The gardeners of Great Finborough and District were encouraged to plant, grow, and entice wildlife to our gardens by presentations from a wide ranging group of speakers.

The social side of the club started off with Open Gardens and the 'Presidents lawn' BBQ followed by the Club members BBQ at 'Jordan'. The final social event of 2010 took place in the Pettward Hall on 2 December. The Christmas quiz over nibbles and mulled wine was another resounding success with many club members enjoying an evening of garden quizzes, good food and good company.

The Club opens in 2011 with a meeting on 10 February, to be held as usual in the upper room of the Pettward Hall at 7.30pm. Our speaker will be Jim Marshall, who will be telling us all about those pretty and beautifully scented group of plants: the Dianthus.

If you are interested in joining the Garden Club or would like to join us for any event you will be very welcome. Membership is £12.50 per household per year. Non-members can attend meetings for £2 per person. For further information contact me or John Davey at john@abbeyclassics.co.uk - see Who's Who.

Judith Cameron

Suzanne Hume
School of Dance
at a Village Hall near you
WOOLPIT
STOWUPLAND
LAVENHAM
Monday & Wednesday. Trial class available.
Fully Qualified Teacher (AISTD)
Fun and enjoyable classes aimed at promoting confidence, encouraging movement and developing coordination, concentration and creativity. Classes are suitable for boys and girls.



Ballet Classes
Baby Ballet Rising 3-5 years
Pre-Primary From 5 years *
Primary 6 years + *
Tap Classes
5-8 year olds *
* Pre-Primary Ballet, Primary Ballet and Tap classes currently run at Woolpit only

Call Suzanne on **01449 736481** or email **suzanne@hume.co.uk**

Hospice wants your Unwanted Christmas Presents

If you received any unwanted Christmas presents this year, please think of donating them to St Elizabeth Hospice. Donations of new or secondhand items are needed to resell in the Hospice's Stowmarket shop and raise funds for the charity.

If you are updating your furniture this Christmas or New Year, the Hospice would also like to hear from you. Van drivers collect good quality sofas, chairs, tables, and cabinets from your home Monday to Saturday. If you have any furniture that you would like to donate please call 01473 744080. St Elizabeth Hospice is a charity. It costs £6.6 million a year to run and provides services free of charge to patients including those in the Stowmarket area. **Sarah Cawley**

MOBILE HAIRDRESSING

**Cuts, Blow Dry's, Perms, Colours
And Highlights**

For an appointment call

Julie

07832 227 117 or 01449 616 708

bury discount bathrooms

Quality Products - Superb Service

Even Better Prices!



**Professional and Reliable
Fitting Service
or Supply Only**

For the best in personal attention and a free home survey call Martin on 07818 681390

☎ 07818 681390

Barton Road, Bury St Edmunds, IP32 7BE

My name is Richard Barry Hare and I live in Cairns, Far North Queensland, Australia. I am researching our family tree. We understand that our great grandfather (Daniel Hare) emigrated from Great Finborough in 1849 to Geelong, Victoria, and remained in that area until his marriage to another English immigrant, Emily Ann Cozens. They raised nine sons and three daughters. The family has since grown exponentially. Daniel (born 1829) was the son of James Hare and Sarah Haynes who were married on 26 November 1816 in the Parish of St. George, Hanover Square, in the County of Middlesex (Borough of Westminster). If this is correct it would also mean the Daniel had three siblings: George (born 1821), Arthur (born 1823) and Amy (born 1826). Hopefully some of their descendants still live in your area. Any information you could provide (contacts etc.) would be greatly appreciated. rbhare@optusnet.com.au **Barry Hare**



Barnards



Volkswagen
Station Road East • Stowmarket
Tel: 01449 612121

www.barnards-aftersales.co.uk

*** MOT's £39.00 ***
Any car • Any make

Tyres at
**very
competitive**
prices.
We offer a **free**
tyre check

Take
advantage
of a **free** 34
point health
and safety
check

All Makes Major Service £249.00
All Makes Minor Service £129.00
Cambelt inc tensioner £349.00 (VAG cars only)



Free collection and delivery in local area • Courtesy
cars available

Please keep an eye on our website for all our up-to-
date offers



CEDARWOOD
VETERINARY PRACTICE

Your Best Friends' Best Friends!

Combs House, Stowmarket Business Park, Needham Road, Stowmarket IP14 2AH

Tel. 01449 676966

- We have everything in house to keep your pets healthy & happy
- Including X-ray equipment
- Full modern dentistry suite
- Separate dog, cat & isolation kennels
- Full blood analysis facilities
- We also run Puppy Clinics, Weight Clinics & Old Dog & Cat Health Clinics

If there's anything you'd like to ask us, give us a call,
or better still, arrange to come and see us
& one of the team will show you round

Large FREE car park

Surgeries throughout the day by appointment
Plus a 24 hour EMERGENCY SERVICE

Practice Opening Hours

8:30am-6:00pm Monday-Friday

8:30am-12:00pm Saturdays

WWW.CEDARWOODVETS.CO.UK



CHIMNEY SWEEP

ECO SWEEP
CHIMNEY SERVICES

- NEW POWER SWEEPING METHODS USED FOR A MORE THOROUGH CHIMNEY CLEAN THAN BRUSHES.
- INDUSTRIAL HEPA FILTERED VACUUM.
- FULLY INSURED.
- INSURANCE RECOGNIZED CERTIFICATES ISSUED.
- STRESSLESS, RELIABLE AND FRIENDLY SERVICE.
- ALL CHIMNEYS WOOD BURNERS, AGA, ROLLER FLUES SWEEP.
- CHARTER OF MASTER, SWEEPS CERTIFICATED MEMBER.




TEL. 01359 232335

SAFEHANDS

Your Local Painters & Decorators

Interior & Exterior

All Aspects of Work Undertaken -

- From Surface
- Preparation / Repairs to
- Final High Quality Finish

For Advice & Free Quotation

01449 736283
07934 705726

yoursafehands@googlemail.com




Simon Woods
Property Maintenance

T: 01449 737268 M: 07900 908846
Sorrel House, Chapel Close, Buxhall,
STOWMARKET, Suffolk, IP14 3RY
E-mail: simonwoods@live.com

- **Building Work & Project Management**
- **Kitchen Fitting**
- **Bathroom Fitting**
- **Bespoke Joinery**
- **Painting & Decorating**
- **Plumbing & Tiling**

"Friendly, reliable service from professional craftsmen"

Reduce your accountancy costs

Call Sarah Place Accountants
Professional, efficient accountants
With over 15 years experience.

Accounts, bookkeeping, payroll, sage,
VAT and Tax returns

01284 747139

TOMLINSON
GROUND CARE

Sales • Service • Parts • Repairs

Lawnmowers walk behind & Ride-on
Compact Tractors 18 to 100 hp
Gator Utility Vehicles
Paddock Maintenance Equipment
Clothing • Merchandise • Toys
Chainsaws • Hedge-cutters • Strimmers
Harrows • Rollers • Sprayers • Trailers
Agricultural Parts • New & Used Stock

Fully equipped workshop & service vans

John Deere Mowers
From £ 200-00 inc vat

The One Stop Garden Machinery Shop



Tel 01449 736060

www.tomlinsongroundcare.co.uk

1 Breettenham Rd, Buxhall
Stowmarket, Suffolk, IP14 3DL

Mon—Fri 7.30am Till 5.00pm
Sat 7.30am Till 12.30pm

Demonstrations : On site
or at customers premises




East Anglian Air Ambulances

Bags of stamps, bags and boxes of ink cartridges, some bags of mobile phones and cash bags containing British and foreign coins were collected from us a few weeks before Christmas. A letter has been received, thanking all those who have contributed towards this splendid collection, which will raise valuable funds to keep the two East Anglian Air Ambulances flying. We are grateful for the many stamps, which have been passed on over Christmas and the early part of the New Year.

Derek Ames

Onehouse Ramblers

The snow we had during November and December gave a beautiful backdrop for some exhilarating walks. By the time New Year's Day arrived, a thaw had set in, making footpaths muddy and very slippery. The 3 hardy souls who did meet up decided against walking as the rain came on heavier! We hope for better next year. 13 February will be a short walk. Meet at the Church Room car park at 2.30pm.

Derek Ames

CHURCH EVENTS IN FEBRUARY AND MARCH

Skylarks Children's Club

The next sessions are on 10 February (St Valentine) and 10 March (Shrove Tuesday): 4.30-6pm in Onehouse Church Room for current members only as we are at capacity at present.

Carole Hearn

Women's World Day Of Prayer Service

This will take place at Buxhall Church on Friday 4 March at 2.15pm. The Theme will be "How many loaves have you?" prepared by Christian women of Chile. Speaker: Revd. Ian Hooper. All welcome. Refreshments served afterwards. Contact me on 612749 if you would like a lift.

Elizabeth Pyke

FROM THE REGISTERS



Rebecca Linda Nelson
Holy Baptism. St Mary's, Buxhall, 28 November 2010

Iona Margaret Christaine Goodwin aged 67
Funeral. St Mary's, Buxhall, followed by Cremation at West Suffolk
3 December 2010

IMJ Goodwin
Interment of Ashes. St Mary's, Buxhall, 4 December 2010

Emily Jasmine Sinclair
Baptism. St Andrew's, Great Finborough, 19 December 2010

Violat Ada Prentice aged 88
Funeral. St Mary's, Buxhall, 10 January 2011.

LAND ARMY DESIGNS

Garden design and build

Call Jane Hamblin

01359 231344

jane@landarmydesigns.co.uk

For an instant garden try "Bed in a Box"

www.bedinabox.net



F. G. BROWN – OPTICIANS
Denmark House, 41 Bury
Street, Stowmarket.
Tel: 01449 612812/674030

As independent opticians we offer a more personalised eye care service that you can trust for all the family

Professional Eye care – Quality Products – Personal Service

Opening hours:-Tuesday-Friday 9.00 am – 5.30 pm
 Saturday 9.00 am – 5.15 pm

Your sight care is our priority





Annya Stoddart
acupuncture
 and yoga

Pain Clinic
 Fertility Support Clinic
 Movement Therapy

- Painful/irregular Periods
- Hayfever/Blocked Sinuses
- Backpain/Sciatica/Migraines
- IVF Support

Acupuncture can help to reduce the severity of your symptoms.

Tel: 07841 203412
 Email: annya@annya-stoddart.co.uk | The Green Room
 www.annya-stoddart.co.uk | Stowmarket IP14 1EF.



Need a Maths tutor?
Look no further...

Experienced Secondary School Teacher in GCSE, A-Level & International Baccalaureate Diploma

Gary Dade BSc (Hons)

Need support to do the Mathematical element of a course or just looking for grade improvement? Give me a call...

- ✓ Fully CRB checked
- ✓ Public liability insurance

Gary Dade - Maths-Tutor
Tel: 07514 042194 or 01449 614043
Email: info@garydade-mathtutor.co.uk
Web: www.garydade-mathtutor.co.uk



Andrew Bingham
 INDEPENDENT FUNERAL SERVICE

Stowmarkets Independent Family Funeral Service

24 Hour Personal Service • Private Chapel of Rest • FREE Parking



Telephone: 01449 771666
www.andrewbingham.co.uk



The Nutshell, Milton Road South, Stowmarket, Suffolk IP14 1EZ

Golden Charter
 Funeral Plans

CHURCH SERVICES IN THE BENEFICE FOR FEBRUARY 2011

Weekday Morning Prayer

Monday	Onehouse	8 – 8.30am
Friday	Great Finborough	8 – 8.30am

Wednesday 2 February

Benefice Communion	Candlemas Finborough	7.30pm
--------------------	-------------------------	--------

Sunday 6 February

Sung Eucharist	Epiphany 5 Buxhall	9.30am
Reflective Morning Prayer	Shelland	9.30am
Holy Communion	Finborough	11am
Matins	Harleston	11am
Evening Worship	Onehouse Church Room	6.30pm

Sunday 13 February

Matins	Epiphany 6 Buxhall	9.30am
Holy Communion	Shelland	9.30am
Family Service	Onehouse Church Room	11am

Sunday 20 February

Family Service	3 before Lent Buxhall	9.30am
Matins	Shelland	9.30am
Holy Communion	Finborough	11am
Family Communion	Onehouse Church Room	11am

Sunday 27 February

Holy Communion	2 before Lent Buxhall	9.30am
Holy Communion	Harleston	9.30am
Time2Worship	Finborough	11am
Holy Communion	Onehouse Church Room	11am

*Whether you are a regular worshipper or visiting this Sunday
you will find a warm welcome at any of our services*

WHO'S WHO IN GREAT FINBOROUGH

Clerk, Parish Council	Giles Hill	740272
	lsdp@btinternet.com	
District Councillor	John Matthissen	771742
	3 Wash Lane Corner, Great Finborough, IP14 3BJ	
	john.matthissen@midsuffolk.gov.uk	
County Councillor	Penny Otton	737870
	penny.otton@councillors.suffolkcc.gov.uk	
Newsletter Editor	Sally Gooch	677940
	sally.gooch@btinternet.com	
Church Warden	Lesley Cass	675970
Church Warden	Brenda Grimaldi	612440
Great Finborough & Buxhall Under 5s	Delia Prior	07708
		362697
Great Finborough & Buxhall Brownies	Gail Jarrett	674538
Chair, Team Finborough (Youth Club)	Sam Vendittelli	
	sam.vendittelli@hotmail.co.uk	
Charity Bingo	Sharla Goldsmith	678480
Candlestick Club	Keith Proctor	736598
Great Finborough & District Garden Club	Judith Cameron	672978
	ianandjudy@btinternet.com	
Royal British Legion	Charles Freeman	01728
		684819
Neighbourhood Watch Co-ordinator	John Davey	674401
Post Office & Village Shop	Nigel & Jeannette	612274
	Edwards	
Head, Great Finborough Primary School	Stephen Dodd	613208
	headteacher@greatfinborough.suffolk.sch.uk	
Chair of Governors, Primary School	Nigel Brown	675344
Police (Elmswell)	PCSO Sian Uttley	01473 613
		5000
Combs Middle School (674666)	Stowmarket High School (613541)	
Stowmarket Health Centre		776000
Combs Ford Surgery		678333
Stowmarket Library		613143
Pettiward Hall Bookings		676249
Village website:	www.great-finborough.co.uk	
Primary School website:	www.greatfinborough.suffolk.sch.uk	