

GREAT FINBOROUGH NEWSLETTER



**July / August 2019
ISSUE 500**

Gt Finborough Village Garden Party 6 July 2pm – 6pm.

VILLAGE DIARY – July

5	4.10pm	Mobile Library, Oak Close
6	2-6pm	Village Garden Party, Broad Oak
8	7.30pm	Parish Council, Pettiward Hall
24	7pm	Film Night, Pettiward Hall
25	7pm	Garden Club BBQ, Little House

VILLAGE DIARY – August

2 & 30	4.10pm	Mobile library, Oak Close
25	7pm	Garden Club BBQ, Little House
28	7pm	Film Night, Pettiward Hall

VILLAGE DIARY – September

7	1.30 – 4.30	Produce Show, Pettiward Hall
9	7.30pm	Parish Council, Pettiward Hall

Zumba class, Pettiward Hall, every Thursday 7pm

Yoga Class, Pettiward Hall, Every Monday, 8pm, Term time only

Brownies, Pettiward Hall, Every Monday, 6pm, Term time only

PARISH COUNCIL MEETINGS 2019

8 July, 9 Sept, 14 Oct, 11 Nov & 9 Dec

7.30pm in Pettiward Hall

The Newsletter is produced by Great Finborough Parish Council, printed by Gipping Press, and distributed to all households in the village free of charge. Claims made have not been verified. For these the newsletter disclaims responsibility.

Editorial

For those who did not closely observe the front cover, this is the 500th issue of the Newsletter, there are 10 issues a year, hang on a minute let me get my calculator, I make that 50 years' worth. That's worthy of a party, well, we do have a Village Garden Party at Broad Oaks on the 6 July, so please come and enjoy yourselves by kind invitation of the Garden Club and Ann & Stephen Basey-Fisher, **you are all welcome.** See further details on **Pages 10 & 16.**

We are mid-way through June as I start compiling the Newsletter and so far, I have measured just over 3 inches of rain this month, that's 75 mls in new money. Being a keen gardener, you think I would be glad of the rain, and I am, but it can stop now for a while. What happened to flaming June?

Talking of being a keen gardener, don't forget to consider your entries for the Produce Show in Pettward Hall, 7 September 1.30pm, its being organised jointly by Gt Finborough Allotment Association and the Garden Club. The entry forms are inserted in this Newsletter. There are classes for Vegetables, Fruits, Flowers, Baking, and Crafts, and of course, we are not forgetting the children, there is a section for under 7's and over 7's.

Simon mentioned this in last month Newsletter, that we are looking for someone to take up the role of Neighbourhood Watch Coordinator, and I make no apology for repeating that message, it is not an arduous role and we are still looking for someone to take it on. It involves keeping a record of those people in the village who want to be in the scheme and are prepared to display the appropriate Neighbourhood Watch sticker on a convenient window or door.

Being in the scheme will make savings on your house insurance.

The 15 August is the deadline for inclusion for the September issue of the newsletter, so please contact Simon Tarabella or Peter Turner, or drop into Maple Lodge, the kettle is always on.

Peter Turner

Great Finborough Parish Council

The June meeting of the Parish Council was held on Monday 10 June at 7.30pm.

The Parish Council vacancy was filled with the co-option of Norman Venditelli, we welcome Norman back to the PC, which he served as Chairman from May 2011 – May 2015. The Parish Council is now at full strength with a blend of experience and new blood.

The completion of the Internal Audit by Heelis & Lodge was noted. The Internal Audit report included one recommendation which has been address by the clerk. The Internal Audit action plan was approved.

Clerks financial report for June 2019 was approved.

It was confirmed that the Chestnut Horse has been re listed as an Asset of Community Value.

The PC approved new councillor training sessions with Suffolk Association of Local Councils.

Vehicle Activated Sign – Discussions took place regarding the purchase of a second VAS/SID machine. It was noted that the use of our existing one has been proven to reduce speeds and a second one especially in the High Road would be a good speed deterrent. If Combs Lane speed limit is reduced, then a further site would be needed in the area. It was agreed to ask councillor Matthissen and Otten for help from their locality budgets. Thanks, were extended to a member of the public for a generous donation towards the purchase cost with a suggestion that local businesses be asked to sponsor the VAS/SID.

Next meeting, 8 July, 7.30pm upstairs room, Pettiward Hall.

Paula Gladwell

News from your District Councillor - John Matthissen

Representing Onehouse, Great & Little Finborough, Combs, Harleston and Shelland

Green Bin Recycling – no more Tetra-paks

It is disappointing to report that Tetra-pak cartons are no longer accepted in the Green Bins. This is because the Materials Recycling Facility (MRF) in Gt Blakenham, where recycling collected from Suffolk households is sorted, will be undergoing a major refurbishment. While this will improve mechanical and optical sorting, the hand-sorting used to separate the cartons will not be available.

In addition, metal saucepans, trays etc are also no longer to go in the Green Bins.

Brown Bins

Please ensure you do not put any plastic pots, trays, or bags into the bin, as these get shredded and then once the garden waste has been composted, the plastic re-emerges. The Environment Agency has been called to local fields due to the extent of plastic from composted garden waste. We all know how damaging plastic waste is to our environment, sea or land. Please take care.

Of course, I continue to encourage everyone to recycle everything that can be reprocessed, noting that Tetra-paks and saucepans can still be recycled via the Household Recycling and Waste Centre on the edge of Stowmarket.

Council Governance

As a result of the election on May 2nd, the Mid Suffolk Council has no overall control, there being 16 Conservative councillors and one Independent, opposed by 12 Greens and 5 Liberal Democrats (LDs). At the Annual Meeting following the election, the out-going Chairman used his casting vote to reassert Conservative control of the Council, including the new Chair, Leader and all committee chairs and vice chairs. The Green and LD group leaders had proposed a shared administration to form a stable council, but this was refused. The new Leader has formed a Cabinet of 8 Conservatives.

Tenants and Leaseholders Housing Survey

Council tenants and leaseholders have been sent a survey asking them to rate the services they receive from Babergh and Mid Suffolk District Councils as their landlord. The Councils have commissioned Marketing Means to carry out a comprehensive housing satisfaction survey. 7,000 households across the two districts will have their say on the housing services they receive from the councils. Returned surveys will be entered a prize draw to win one of four £50 shopping vouchers.

John Matthissen (See Who's Who)

Over 60s Candlestick Club

After May's exciting mystery tour, the June outing for the Over 60s turned out to be quite a tame affair. We left the villages and Stowmarket and headed over the border to Cromer. A walk along the seafront and pier, and fish and chips, made it a most enjoyable day.

Our July outing sees us travelling west this time to Knebworth House, an ancestral house with park and gardens in Hertfordshire. We shall be leaving Buxhall Village Hall at 9.00am with pick-ups in Great Finborough, Onehouse Road and Combs Ford. Cost is £25 which includes a guided tour of the house. The date for this trip is Thursday 4 July.

August sees us on the road again to the Flixton Air Museum, then onto Bungay to look around and lunch. The date for this outing is Thursday 1 August, leaving Buxhall Village Hall at 10.00am and picking up in Great Finborough, Onehouse Road and Combs Ford. Cost is £15 for trip only. Please let Keith know if you wish to go on either outing. (Telephone 736598)

New members always welcome. **Keith Proctor**



Developing & Delivering your Architectural Dreams

Residential | Commercial | New Build | Listed | Free Initial Consultation

T: +44 (0) 1449 708510 E: tim@timmoll.com www.timmoll.com



DESIGN | PRINT | PROMOTION

Planning an event in 2019?

Give us a call and we would be more than happy to advise and help on postage, signage, flyers, banners and programmes.

Tel: 01449 721599 Email: enquiries@gippingpress.co.uk

www.gippingpress.co.uk

Units 1&2 Lion Barn Industrial Estate,
Needham Market, Ipswich, Suffolk IP6 8NZ

The Pettiward Hall

“Little Ernie”

The winners in the June lottery were Jane and Rodney Self and Pat Turner. They received £8.75.

Grant

I am pleased to announce that the hall charity has been awarded a grant from Suffolk County Council's Green Suffolk Fund of 50% of the cost of installing LED lights at the hall. We hope that the work will be undertaken in the next few months.

Mary Preece

Events in Onehouse

On Saturday July 13 at Onehouse Rectory, Woodland Close there will be a themed gnome Garden Party from 2pm until 5pm. There will be numerous games and stall with prizes. Cream teas will be available also and homemade cake and a produce stall. Any contributions will be gratefully received. For any enquiries please contact Mary on 615203 or Sylvia on 615592. All proceeds to Onehouse Church.

Pauline Higham is in the process of organising a Children's Holiday Club from Monday 29 July until Friday 2 August. These sessions will be held in the Trinity Hall from 10am until 12 noon. Along the lines of Messy Church activities will include assorted crafts and bible stories. If you and your child would like more information give Pauline a call on 771791.

Carole Hearn

Coffee Morning

The next two Community Coffee Morning will be on Tuesday 9 July & 13 August from 10.00 – 11.45am **at St Andrews Church**. £2.00 coffee/tea free refill and homemade cake, **everyone welcome**. As usual there will be a raffle. If the weather's good, we will have tables and chairs on the lawn. Look out for our banner advertising the monthly events! Charity in July is St Andrew's Church & Child Autism UK
Charity in August is St Andrew's Church & charity to be decided.

Irene Bugg

HENRY'S HOUNDS



Dog walking, house drop ins and house sitting

If you're at work or going out all day and your dog(s) need walking or even just letting out for a half hour break, then I can help.

Use of 10 acres of securely fenced fields in Buxhall for off lead walks in a safe environment, ensuring plenty of exercise and maximum enjoyment

Drop ins include letting dogs out to relieve themselves, a little playtime plus refreshing water bowls and feeding if required

House sitting if you're out for the night or away on holiday

CRB checked and insured

Please contact me to discuss your requirements or find out more details Henry Alexander: 07923 371164 | henry@henryshounds.co.uk
www.henryshounds.co.uk | Facebook: henryshounds94

Castell Carpentry

Doors Supplied & Fitted
Shelves & Storage
Cupboards & Cabinets
Fitted Furniture

Call Tom
0757 900 8271

tom@castellcarpentry.co.uk

TIME FOR YOU™

DOMESTIC CLEANING

Reliable - Weekly - Insured - Cleaners



**We clean so
you don't have
to!**

**Call us on
01359 258991**



Typically £12 per hour



www.timeforyou.co.uk
suffolk@timeforyou.co.uk

Great Finborough & District Garden Club

All the gardeners/ allotmenters had been praying for rain and look what we got, floods and downpours. Fortunately, it came without the swirling winds that can wreak such havoc with delphiniums and other tall beauties. Unfortunately, it also meant that the evening visit to Wood Farm, Gipping had to be postponed until the 17th June due to the wet conditions underfoot.

At the time of writing the flower arranging workshop with Vicki Hease on the 29th has not yet taken place so a report on these two events will be in the next newsletter.

The Village Garden Party is on the 6th July from 2-6PM, which is open to all residents of the village and their families. This will be held in the grounds of Broad Oak by kind permission of Stephen and Ann Basey-Fisher and is a **free** event to thank everyone in the village for their support over the past years. There will be a band, garden games, a Classic car display, a cash bar will be available as well as tea and cakes and a BBQ. Other details are in a separate notice in the magazine.

On September 7 the Allotment Association and Garden Club are holding a Produce Show in The Pettiward Hall. Details of classes and entry forms will be available soon.

The club Summer Social and BBQ will again be held at the Little House by kind invitation of Pat and Peter Turner. This will be on the 25th July from 7PM and details will be circulated later.

Finally, if you are interested in joining the garden club or would like to join us for any event you will be very welcome. Membership is only £15 per household per year or £2.50 per individual for a single meeting. For further information contact: Judith Cameron (See Who's Who)

Judith Cameron

Too busy?



Let Ovensclean take care of it!

OVENCLEAN
The original oven cleaning specialists

Tel: 01359 259818
or visit www.ovenclean.com
to find your local specialist

GIDNEY PLUMBING & HEATING

Tap Changes, Ball Valves, Shower Pumps,
Water Softeners, Hot Water Cylinders,
Bathroom, Wet room & Kitchen Installs,
Radiator & Valve Replacements,
Underfloor Heating, Heating System Repairs,
Renovation & New Builds.

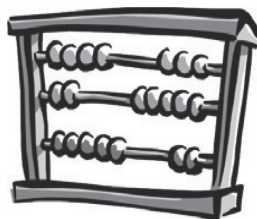
24 Hour Emergency Cover
Professional & Reliable Service

07534525263
01449 258254

gidneyph@outlook.com
www.plumbinginsuffolk.com

TWINN ACCOUNTANTS LTD

We offer an **efficient and professional accountancy** service at a very competitive rate.



- ✓ Annual accounts and tax returns for Sole Traders, Partnerships and Limited Companies
- ✓ Preparation and assistance with VAT returns
- ✓ Payroll Services
- ✓ Construction Industry returns
- ✓ Management Accounts
- ✓ Tax Planning
- ✓ Company Secretarial Services

Tel: 01284 787616

Fax: 01284 787183

Email: info@twinnaccountants.co.uk

www.twinnaccountants.com

All accountants are not the same...we promise!

From the Rectory June 2019



I think that we are all in need of a great deal of encouragement these days. Our national life is nervous, our churches are stressed by pressures of money Safeguarding and administration. Our local town centre struggles in many ways and we hear of large redundancies. Not all of us are called to be entrepreneurs, administrators, preachers or organisers but all can be Encouragers. I am

always reminded of this most important aspect of communal life when we arrive at the 11th June each year and hear of Barnabas the Apostle whose day we celebrate. Not one of the original Apostles, he was chosen by Lot to replace Judas. He is known as The Encourager.

School governors spend time each term looking at pupil Data, anonymised of course, to try to ensure the school is doing all it can to develop each child's physical mental and spiritual life Of course different strategies are employed to help each child as we all learn differently, but I suspect one of the greatest and perhaps the oldest is simply that of gentle and kindly 'encouragement'. We all need it don't we – however old we are and whatever situation we find ourselves in?

Both our church schools are looking for Governors. The involvement is more than suggested above and we welcome people from all walks of life, retired or not. YOU can make a difference – I have seen it and if you would like to be involved please let me or the headteachers know.

Rev Chris

Christian Aid Week is Past BUT



Thank you for the wonderful support received at the BIG BREKKIE which raised £340, the Coffee Morning £110 and the supplementary Church Collections across the parishes, £320 making the magnificent total of £770.

Wholeness and Healing services are at Onehouse on 21st July at 6.30pm and Combs on 28th July at 11am. Information from Chris & Pauline was in last month's magazine.

St John's Onehouse is pleased to have a new Electronic organ as a result of kind donations in memory of Anne Moore who many remember as Churchwarden and Elder for many years. It will be dedicated at a special service in due course. *The rumour that it only plays Welsh tunes is just that.... a rumour. Come and hear.....*

I hope there will be good support for our **children's activities** for all the parishes in Lt Finborough and Onehouse over the summer

Rev Chris

Combs and Finborough Group of Churches

INVITE all primary aged children to

Trinity Hall Forest Road Onehouse for

J Team

Monday 29th July to Friday 2nd August
10-12.00noon

Games, Bible Stories, Crafts, Music, Refreshments and more

Information and Booking (advisable)
Canon Pauline at Onehouse Rectory 01449 771791 or
paulinehigham@googlemail.com

ALL SEASONS LANDSCAPE GARDENING

Garden Landscaping • Turf Laying • Paths & Patios
Garden Maintenance • Hedge Cutting • Fencing
Specialise in Low Maintenance Gardens

Established since 1998 Fully Insured & Guaranteed

For FREE estimates and more information on our service call **Simon** on

01449 720221 / 07922 035204

email: suffolksi68@gmail.com

www.allseasonslandscapegardening.co.uk

Stowmarket Chorale performed their Summer Concert *Shakespeare meets Jazz* at the United Reformed Church, Stowmarket in June. It was a refreshing blend of songs and sonnets by Shakespeare, set for 4-part voices and performed in a jazz style with Samuel Hollis playing double bass and Thomas Hawkes on piano. Various passages from works by Shakespeare were read and recited by Henry Stanford and Jamie Glasse from Earl Stonham Theatre Guild.

For something completely different, we are hosting a Dog Show at Rattlesden Pavilion on Saturday 27 July, 10.00 am - 4.00pm. There are many classes, and the day is aimed to be a fun day out for you and your pet. For further details contact Lucy at lucy@luphen.co.uk (01359 240676).

The Chorale is having a break during the summer and will return for rehearsals to Combs Ford Primary School, Glemsford Road, Stowmarket, IP14 2PN on Wednesday 18th September, meeting at 7.30pm. Contact: secretary@stowmarketchorale.org.uk (07901 758009) for further details.



The Hearing Care Centre Ltd
11 Upper Brook Street, Ipswich,
Suffolk, IP4 1EG
Telephone: 01473 230330

TUESDAY 11TH JUNE 2019 – FOR IMMEDIATE RELEASE
Local Quiz Night Raises Over £2,600

Regarded as one of the region's biggest quiz events, a local family run hearing care company held their bi-annual quiz night which managed to raise an incredible amount for a UK deafness charity. The Hearing Care Centre hosted their seventeenth quiz fundraiser in Kesgrave on Sunday 9th June 2019. Presented by BBC radio presenter Stephanie Mackentyre, the evening was supported by 200 guests who enjoyed 9 rounds of tough trivia, with five teams taking home cash prizes. Tickets for the quiz sold out in less than a week, which further demonstrated the event's popularity. Thanks to generous support from local businesses, ticket sales and a bumper raffle, £1,624.37 was raised on the night. This was then boosted with an extra £1,000 as a fund-match from the team at Barclays in Ipswich, taking the total to £2,624.37. This event was all in aid of Hearing Dogs for Deaf People, a charity close to the hearts of The Hearing Care Centre. Karen Finch, Managing Director and founder of The Hearing Care Centre expressed: "Hearing Dogs give many deaf people confidence, independence and companionship. I want to give a huge thank you to everyone who helped us support this great charity". The Hearing Care Centre's next initiative is their Summer Pudding Club, an all you can eat dessert lover's paradise, which is currently in the process of being organised. Visit hearingcarecentre.co.uk/news to keep up with all the latest.

Further Information: Matthew Coward (Marketing Manager) 01473 228075 or marketing@hearingcarecentre.co.uk.

Great Finborough and District Garden Club invite you to



A GARDEN PARTY

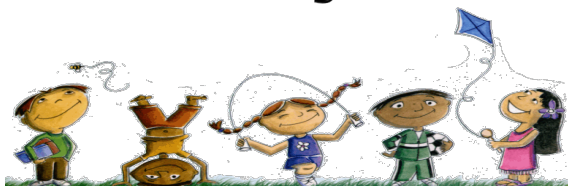
**At Broad Oak, High Road, Great
Finborough**

On Saturday 6th July 2019

2pm to 6pm

**Car parking in Village Hall Car Park (opposite
Broad Oak)**

**Entry and Games for all ages free of
charge**



**To include: Putting, Tyre Targets, Card Game,
Splat the Rat, Jenga and kick around football**

Line up of Classic Cars

Live Band Teas and Cakes Bar BBQ



**Providing Personal Care
in your own Home**



**Recruiting
NOW!**
We need
exceptional
people who
love to
care

Do you need help with:

**Personal Care
Dementia Care
Respite Care
Help Around the
House
Day Trips Special
Occasions**

**Request a
Brochure or book
an appointment
on 01449 763086
or 01284 711845**



We only employ people who love to care.

 **MyCare
at Home**
Supporting Independent Living

www.mycare-at-home.co.uk

**Tank
Change
Limited**

Does your Oil Tank need replacing?
We are your local oil tank installer established
since 1989 with over 16,000 installations to date

- New oil tank installations, relocations and servicing
- Emergency pump out service available for leaking oil tanks
- Kingspan Titan polyethylene tanks and steel tanks held in stock
- OFTEC registered
- Kingspan Titan Accredited
- Fully insured
- Parish magazine discount
- Free surveys

Tel. 01449 781210

Email: enquiries@tankchange.co.uk

www.tankchange.co.uk



Registered
Business



Is it too early to talk about Christmas???

Here we are in June and I wonder if it's too early to mention the "C" word!! The reason I will is because St Andrew's Parochial Church Council (PCC) as lead event sponsor, in conjunction with other village community groups is arranging a traditional Christmas day lunch in Pettward Hall.

The principle aim of the event is to provide any resident of Great Finborough who would otherwise be on their own on Christmas day, with an invitation to a community traditional Christmas day lunch with the fellowship and friendship of other residents within the village, at no cost to them.

The guest list criteria would be as follows:

1. Resident of Gt Finborough who would otherwise be on their own on Christmas Day.
2. Resident of Gt Finborough who for financial reasons would not be able to afford to cook a nutritional Christmas lunch.
3. Resident of the adjacent parishes of Buxhall and Onehouse who would otherwise be on their own on Christmas Day.
4. An individual nominated at the discretion of Chris/Pauline from within the benefice that would otherwise be on their own on Christmas day or for financial reasons would not be able to afford to cook a nutritional Christmas lunch.

For those requiring transport this will be arranged either by car or minibus if numbers require. There will be a driver plus escort to help people to their door.

The event is expected to take place from midday on Christmas day until approx. 4pm. If you think you would be interested in attending or know of somebody who might like to attend or you would be interested in helping in some manner please contact Tim Hines (07806 559499) or Simon Tarabella (07771762600). Please note, attendance will be by invitation only.

Great Finborough Community Christmas Group

Wild Bird Seed

The next order will be placed on the **30 July**. Bird seed will be ready for collection from Abbey Farm Cottage after **10am and before 6pm on Wednesday 7 August**. To place an order, let me have your requirements together with a cheque made payable to "Great Finborough Garden Club", or payment by Bac's to Gt Finborough & District Garden Club. Sort, 09-01-54 Account - 20213287 Reference - your name & B/S. Please include your telephone number on your order. Orders may be posted to or dropped off at The Little House, High Road, Gt Finborough, IP14 3AA, or dropped off at 1 Valley Lane, Gt Finborough.

Name

Tele No

Product	Weight	Price	Quantity
Wild Bird Mix	20 kg	£10-50	
W.B.M. Premium	20kg	£12.00	
W.B.M No Wheat	20kg	£14-50	
W.B.M NEW High Energy	12.75 kg	£12-50	
W.B.M. No Mess	12.75 kg	£13.00	
W.B.M Robin & Songbird	12.75 kg	£13-00	
Finch Mix	20 kg	£12.00	
Mixed Corn	20 kg	£8-50	
SUPER Poultry Mix	20kg	£9-50	
Peanuts (superior quality)	25 kg	£33-00	
Peanuts (half sack)	12.5 kg approx	£17-50	
Black Sunflower Seed	12.55 kg	£10-50	
Sunflower Kernels	20 kg	£22-00	
Sunflower Kernels	10kg approx.	£12-00	
Nyjer Seed	20kg	£26-00	
Nyjer Seed	10kg approx.	£13-50	
Suet Pellets	12.75kgs	£17-00	
Fat Balls (any quantity)	Price each	10p	
Suet Balls (Superior)	Price each	13p	
		Total	

Orders not collected on the day will require customer to make special arrangements to collect. The next seed order will be October.

Thank you, **Peter Turner** (674407) p.turner125@btinternet.com

FINBOROUGH FILM NIGHT



'Fisherman's Friend' (12A)

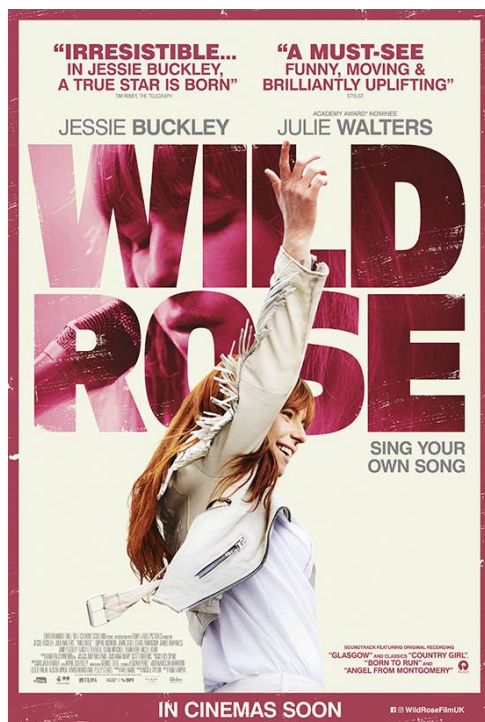
Pettiward Hall

Wednesday 24th July 2019

- Screening commences at 7.00pm
- Complimentary tea & biscuits in the interval
- Tickets: Adults £5 Children £3
- Tickets can be purchased on the door.

For more information please contact **Norman** on 07930 338580

FINBOROUGH FILM NIGHT



'Wild Rose' (15)

Pettiward Hall

Wednesday 28th August 2019

- Screening commences at 7.00pm
- Complimentary tea & biscuits in the interval
- Tickets: Adults £5 Children £3
- Tickets can be purchased on the door.

For more information please contact **Norman** on 07930 338580

A & C Fencing & Landscaping.

Fence erection - Landscaping - Patios and sleeper walls - Shed bases laid & sheds erected - Lawns & grass areas up to 4 acres cut - Hedge cutting – Driveways - General garden maintenance - Any small building projects.

Free no obligation quotes contact Andrew Wade.

07748785197 or 01449674093 or email

wade.andrew63@gmail.com



Professional Tree Surgeon and team
that can maintain your gardens big or small



Trees & Hedges

Felled, Pruned, Shaped, Dead / Broken & dangerous hanging branches removed to make them safe.

Hedges cut and maintained to your specification

Gardens

Lawns cut, Borders trimmed, Shrub beds cleaned

Ground Clearance

Large or small areas of scrub cleared and removed

Fences

Panelled. Wired, Post & Rail, Erected or Mended

Free, no obligation, quotations

01449 720157 / 07788590779

james.firman@treesandfences.com / www.treesandfences.com

BUXHALL WI



Our May monthly meeting took on a slightly different approach as we all enjoyed a social Bingo evening following our debate and vote on the WI 2019 resolutions. Both resolutions a) Against the decline of local bus services and b) Don't Fear the Smear were supported by our members.

On Sunday 2nd June several members with their partners enjoyed 'Fabulous Fakenham' Ladies Day. The sun shone all day, the odds were good, and the winnings were even better for some race goers. Requests for a repeat visit next year have already been made to the Committee.

Following closely on from this escapade, on 5th June our evening walk was around Combs Ford, passing the church and wood. As we ended this walk in light rain the draw of The Magpie was a well-timed and a perfect retreat before the 'real' downpour started. We enjoyed a hearty supper, good company and conversation.

Forthcoming Meetings

July meeting: Pauline Baker: Frock Horror! – The Confessions of a Costume Designer.

August meeting: Leon & Jenny Pettersson: Ceramic Craft

September meeting: Simon Gallup: The Past & Present of Constable Country

Don't forget, we meet every third Wednesday in the month and new members are always welcome.

Date of next meeting: 17th July 2019 at 7.30pm.

Venue: Buxhall Village Hall

Hilary (737671)

BARGEWELL SKIP HIRE

2, 3, 4, 5, 6, 7 & 8 yard skips

Long or short term hire

Delivery service 7 days a week

Fast friendly service

Stowmarket 01449 615056

Mobile: 07770 452378

High Rd, Gt Finborough, Suffolk

www.bargewellskiphire.com

Credit cards accepted

TOMLINSON GROUND CARE

Horticultural & Garden Machinery Suppliers

Sales • Service • Parts • Repairs



1 Brettenham Road
Buxhall, Stowmarket, IP14 3DL
www.tomlinsongroundcare.co.uk

01449 736060

Opening Times

Mon– Fri 7.30 am to 5.00 pm

Saturday 7.30 am to 12.30 pm



Visit our LARGE SHOWROOMS

This advert is too small to be able to show you all we have to offer, please visit our website or come and have a cup of tea/coffee and discuss your requirements.

Main Al-Ko and John Deere Dealers,
over 15 ride-on and 25 walk-behind mowers to Try before You Buy

Arboricultural & Landscaping Solutions

- All Aspects of Tree Surgery
- Soft & Hard Landscapping
- Maintenance & Lawn Care
- Fencing
- Domestic & Commercial
- Fully Insured
- NPTC Qualified

For more information please visit:
www.greenscenetreesurgery.co.uk



GREEN SCENE

PLEASE CONTACT US TODAY FOR FREE QUOTATIONS & ADVICE

Phone: 01359 298141 Mobile: 07866 866 880

Email: greenscene@hotmail.co.uk



Andrew Bingham

INDEPENDENT FUNERAL SERVICE

Local Caring Independent Funeral Service

24 Hour Personal Service * Private Chapel * FREE Parking

www.andrewbingham.co.uk

01449 771666

The Nutshell, Milton Road South, Stowmarket, IP14 1EZ



Golden Charter
Funeral Plans



**Are you looking for a high-quality decorator?
Look no further!
Service with a smile, for all your decorating needs!**

Honest, reliable service
Clean and tidy

Claire Marks

Tel: 07895 277357

Email:
Claire.marks@housetohomedecorating.co.uk

Web: www.housetohomedecorating.co.uk

*Fed up of running around
after your car?*

Why not give us the inconvenience
– it's part of our service

WE COLLECT & DELIVER

Servicing, Welding,
MOTs arranged
Air-conditioning recharged
General Repairs –
shocks, clutches, brakes etc
All work guaranteed

S & P Motocare
Est 1990

Contact: Shane
Tel: 01449 771102 or 07802 545737

***Personal Service at
Competitive Rates!***



REWTS
TREES AND GARDENS



Tel: 0782 5253 720

Email: info@rewtstreesandgardens.co.uk
www.rewtstreesandgardens.co.uk

Qualified tree surgeon & horticulturist
offering

- ☐ **Tree surgery:** from light pruning to large tree take down, surveys and stump removal.
- ☐ **Garden landscaping:** fencing, patios, decking, ponds, water features, planting designs.
- ☐ **Garden maintenance.**
- ☐ **Firewood:** Split and seasoned ready to burn. Any size, any quantity.

T.P. Services

UPV-c Window & Door Repairs

**Sealed Units, Hinges,
Locks, Handles, Letter Boxes**

**Over 30 years' experience,
free quotations**

Contact: Tom

Mob: 07957 098118

Email: tpservices65@gmail.com

CHIMNEY SWEEP

ECO SWEEP CHIMNEY SERVICES

- NEW POWER SWEEPING METHOD USED FOR A MORE THOROUGH CHIMNEY CLEAN THAN BRUSHES.
- INDUSTRIAL HEPA FILTERED VACUUM.
- FULLY INSURED.
- INSURANCE RECOGNIZED CERTIFICATES ISSUED.
- SPOTLESS, RELIABLE AND FRIENDLY SERVICE.
- ALL CHIMNEYS, WOOD BURNERS, AGA, BOILER FLUES SWEEP.
- GUILD OF MASTER SWEEPS CERTIFICATED MEMBER.



TEL. 01359 232335



Charisma Hair
01449 677202

86a Forest Road, Onehouse
charismahair.co.uk / 01449 677202

- Full range of styling and colouring
- OPU manicures including gel polish
 - Eyebrow tint and shape

(Closed on Mondays and Tuesdays)

FRIENDLY EXPERT FINANCIAL ADVICE

Need extra income from your investments?
Want to understand pension freedoms and what these might mean for you?
Or require a financial expert to talk to?

Rob Marek FPFS
Chartered Financial Planner

**Call 01449 723526 or
07462 250746**

To book a free initial consultation
today

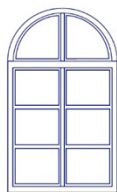


independent financial advisers

XL Independent financial advisers are
authorised
and regulated by the Financial
Conduct Authority
[FCA]. Our FCA number is 415232.

enquiries@xlifa.co.uk
www.xlifa.co.uk

Unit 12-13, Norfolk House,
Williamsport Way, Lion Barn Ind Est,
Needham Market, IP6 8NZ



MILES ROLFE JOINERY

**Production, Design & Fitting of All
Aspects of Joinery & Furniture**

Gt. Finborough • Suffolk

07880 776845 mobile
mrjoinery@live.com

01449 771338 evening
milesrolfejoinery.co.uk

Follow me on Facebook

CHURCH SERVICES IN THE BENEFICE FOR July 2019

Rector: The Revd Chris Childs, The Rectory, 135 Poplar Hill,
Stowmarket IP14 2AY **01449 673280**

Associate Priest: The Revd Canon Pauline Higham, The
Rectory, Woodland Close, Onehouse IP14 3HL **01449 771791**

7 July: Trinity 3, Third Sunday after Trinity

Isaiah 66.10-14; Psalms 66.1-8; Galatians 6. (1-6)7-16; Luke 10.1-11,16-20

9.00 am	Holy Communion	Chris Childs
	Little Finborough	
9.30 am	Service on the Green with band	Pauline Higham /
Rod Higham	Harleston	
11.00 am	Worship & Messy Church	Chris Childs
	Combs	

14 July: Trinity 4, Fourth Sunday after Trinity

Deuteronomy 30.9-14; Psalms 25.1-10; Colossians 1.1-14; Luke 10.25-37

9.30 am	Holy Communion	Chris Childs
	Harleston	
9.30 am	Holy Communion	Pauline Higham
	Shelland	
9.30 am	Matins	Ray Taylor
	Buxhall	
11.00 am	Holy Communion	Chris Childs
	Combs	
11.00 am	Morning Worship	Pauline Higham
	Onehouse	
6.00 pm	Evensong	Rod Higham
	Little Finborough 6.30 pm	Evensong
	Chris Childs	Great Finborough

21 July: Mary Magdalene

Song of Songs 3.1-4; Psalms 42.1-10; 2 Corinthians 5.14-17; John 20.1-2,11-18

9.00 am	Holy Communion	Pauline Higham
	Little Finborough	
9.30 am	Holy Communion	Chris Childs
	Shelland	
9.30 am	Morning Worship	Derek Ames
	Harleston	
11.00 am	Family Communion	Alison Lay
	Combs	

11.00 am	Holy Communion	Chris Childs / Derek
Ames	Great Finborough	
6.30 pm	Evensong	Rod Higham
	Buxhall	
6.30 pm	Evening Worship	Pauline Higham /
Chris Childs	Onehouse	
	<i>Includes Wholeness and Healing ministry</i>	

28 July: Trinity 6, Sixth Sunday after Trinity

Genesis 18.20-32; Psalms 138; Colossians 2.6-15(16-19); Luke 11.1-13

9.30 am	Holy Communion	Pauline Higham
	Buxhall	
9.30 am	Holy Communion	Michael Eden
	Harleston	
11.00 am	Holy Communion	Pauline Higham
	Combs	
	<i>Includes Wholeness and Healing ministry</i>	
11.00 am	Holy Communion	Michael Eden
	Onehouse	
11.00 am	Morning Worship	Nigel Brown
	Great Finborough	
6.00 pm	Evensong	Rod Higham
	Little Finborough	

4 August: The Transfiguration of our Lord

Daniel 7.9-10,13-14; Psalms 97; 2 Peter 1.16-19; Luke 9.28-36

9.00 am	Holy Communion	Pauline Higham
	Little Finborough	
9.30 am	Sung Eucharist	Chris Childs
	Buxhall	
9.30 am	Matins	Ray Taylor
	Shelland	
11.00 am	Holy Communion (by extension)	Rod Higham
	Great Finborough	
11.00 am	Holy Communion	Pauline Higham
	Onehouse	
11.00 am	Worship & Messy Church	Chris Childs
	Combs	

We meet for

Midday Prayer	11.45 am on Tuesday at St. Mary's, Buxhall
Holy Communion	9.30 am on Wednesday at Trinity Hall, Onehouse
Evening Prayer	4.30 pm on Thursdays at St Andrew's, Great Finborough
Morning Prayer	10.00 am on Saturdays at St. Mary's, Combs (Lady Chapel)

All welcome!

Whether you are a regular worshipper or a visitor to our churches this Sunday, you will find a warm welcome at any of our services.

Great Finborough Mobile Library Service 2019 at Oak Close on Fridays as follows:

July 5, Aug 2, Sept 27, Oct 25, Nov 22 and Dec 20



F. G. BROWN – OPTICIANS
Denmark House, 41 Bury
Street, Stowmarket.
Tel: 01449 612812/674030

As independent opticians we offer a more personalised eye care service that you can trust for all the family

Professional Eye care – Quality Products – Personal Service

Opening hours:-Tuesday-Friday 9.00 am – 5.30 pm
Saturday 9.00 am – 5.15 pm

Your sight care is our priority

WHO'S WHO IN GREAT FINBOROUGH

Chair, Parish Council	Simon Tarabella simon.tarabella@great-finborough.suffolk.gov.uk	672072
Clerk, Parish Council	Paula Gladwell finboroughparishclerk@gmail.com	01284 828112
District Councillor	John Matthissen councillor@matthissen.net	258894
County Councillor	Penny Otton penny.otton@councillors.suffolkcc.gov.uk	737870
Newsletter Editor	Simon Tarabella simon.tarabella@great-finborough.suffolk.gov.uk	672072
Vicar	Rev. Chris Childs <i>Combs Rectory, 135 Poplar Hill, IP14 2AY</i> revcchilds@aol.com	673280
Associate Priest	Rev Canon Pauline Higham <i>The Rectory, Onehouse, IP14 2AY</i>	771791
Church Warden	Tim Hines	775525
Church Warden	Nigel Brown	675344
Pettward Hall Management Committee	Mary Preece	771360
Lettings/Keyholder	mary.preece1@btinternet.com	
Great Finborough & Buxhall Under 5s	Delia Prior delia@gfbunderfive.co.uk	07513 140072
Great Finborough & Buxhall Brownies	halo.durrant@gmail.com	
Allotments Association	Mary Smyth	672533
Candlestick Club	Keith Proctor	736598
Great Finborough & District Garden Club	Judith Cameron judyandian@btinternet.com	672978
Chestnut Horse Pub		674688
Buxhall Women's Institute	Hilary Hall hilary-hall@hotmail.co.uk	
Head teacher, Great Finborough	Stephen Dodd	613208
Primary School	headteacher@greatfinborough.suffolk.sch.uk	
Police (Stowmarket SNT)	Stowmarket.snt@suffolk.pnn.police.uk	101
Stowmarket High School		613541
Stowmarket Health Centre		776000
Combs Ford Surgery		678333
Stowmarket Library		613143
Village website: www.greatfinborough.onesuffolk.net		
Church website http://www.standrewsgtfinborough.co.uk/		
Primary School website: www.greatfinborough.suffolk.sch.uk		