

GREAT FINBOROUGH NEWSLETTER



**December 2018 / January 2019
ISSUE 494**

VILLAGE DIARY – December

1	12.30-4pm	Primary School Christmas Fair, Primary School
1	7.30pm	Gilbert & Sullivan Concert, St Andrews Church
3	6pm	Brownies, Pettiward Hall
6	7pm	Garden Club Christmas Party, Pettiward Hall
10	7.30pm	Parish Council Meeting, Pettiward Hall
11	9.30-11.30am	Coffee Morning, Chestnut Horse
13	8pm	Pub Quiz, Chestnut Horse
17	6pm	Brownies, Pettiward Hall
19	7pm	Film Night, Pettiward Hall
21	4.10pm	Mobile Library, Oak Close

VILLAGE DIARY – January 2019

14	7.30pm	Parish Council, Pettiward Hall
14	8pm	Yoga, Pettiward Hall
16	7.00pm	Film Night, Pettiward Hall
21	8pm	Yoga, Pettiward Hall
28	8pm	Yoga, Pettiward Hall

PARISH COUNCIL MEETINGS 2018/2019

10 December

14 January

7.30pm in Pettiward Hall

The Newsletter is produced by Great Finborough Parish Council, printed by Gipping Press, and distributed to all households in the village free of charge. Claims made have not been verified. For these the newsletter disclaims responsibility.

Editorial

We are entering the last month of the year and speeding towards the festive season, where did the year go? As I was wandering around the countryside today, enjoying the Autumn colours in glorious sunshine, I thought to myself we are so lucky, this enjoyment is all free. The big skies of Suffolk and its rolling countryside leaves little to be desired, those of us that have lived in this county most of our lives do tend to take it for granted sometimes.

As we moved towards the new year Gt Finborough residents need to take stock, there is a great community spirit in this village for those who want to be part of it. But it hasn't always been that way. Next year in May will see the parish council elections and there will be vacancies, two of the current councillors have moved out of the village and there will be others standing down. Over the last few years this village has seen a step change for the better, the village is cared for and that is reflected in its appearance. So, step up if you want to keep the great in Gt Finborough, the village can't look after itself. The parish council is very lucky to have a very well respected and experienced parish clerk in Paula Gladwell which makes the job of councillors a great deal easier.

Looking for Help. 3 years ago, Simon Tarabella and I took over the editing of the village Newsletter on a temporary basis, Simon I must say has carried out the lion's share. So, if you would like to help with this essential publication. please contact Simon or me.

A warm Finborough welcome to **Sue & Keith Yates** who recently moved into 2 Valley Farm Barn.

Finally, Merry Xmas and a happy New Year to all our readers.

The 15 January is the deadline for inclusion for the February 2019 issue of the Newsletter, so please contact Simon Tarabella or Peter Turner, or drop in to Maple Lodge, the kettle is always on.

Peter Turner

Great Finborough Parish Council

Our November meeting began on a sad note with the resignation of Cllr Robin Fisher. Robin has been a Parish Councillor here at Great Finborough for nearly eight years and with a recent home move to outside the village and the end of a four-year term looming Robin has decided to step down. He will be sorely missed for his contribution to the Parish Council and his commitment to the community.

We now have a vacant seat at the Parish Council table, albeit only until May 2019 when we have the next Parish Council elections. We could of course just run with the vacant seat until May, but we would much rather try and co-opt someone onto the Council who can contribute to the community for the next few months and then hopefully fit in so well that they will want to stand for election in May and then stay for a further 4 years.

So, IS THIS YOU???? would becoming a Parish Councillor be something you might be interested in? All you need to do is answer YES to the following;

Are you over 18?

Do you live within three miles of Great Finborough or work here?

Are you on the Electoral Roll?

Are you interested in helping to improve the quality of life of your community?

Do you want to be involved in making important decisions in your community?

Please contact the Clerk or any of your Councillors if you would like to be considered for the position or need more information. Closing date for applications is 24th December 2018

Other Business;

Planning -Two applications were considered this month, the first with a "No objection" comment submitted for DC/18/04702 Erection of an extension and conversion of a garage at Puddocks End.

The second, the re-consultation following a site plan alteration for DC/03710 Erection of 7 dwellings at Peartree Place, which had Councillors deciding that they had no additional comments to add to their previous Objection to this development.

Annual Playground Report - Our external play equipment inspection this year has resulted in a few very low risk recommendations which will be carried out over the next few weeks.

Footpaths - We have a few broken way markers and some planks missing from some bridges which will all be reported to Rights of Way for remedial action.

Potholes seem to have been kept in check more recently, perhaps due to some recent increased funding by the County Council specifically for pothole repair.

If you do see any maintenance issues on your travels around the village, please let me know and I will be happy to report them to the relevant local authority for consideration.

Alternatively, you can easily report problems on the roads, like potholes, online using this link

<https://highwaysreporting.suffolk.gov.uk/>

or contact customer services for Mid Suffolk District Council and Suffolk County Council on 0845 606 6067 they are usually very quick to help.

The next parish council meeting will be held on Monday 10 December at 7.30pm in the upstairs room at Pettward Hall and everybody is welcome to come along.

Paula Gladwell

The Pettiward Hall

"Little Ernie"

The winners in the November draw were Cathy & Nick Croome and John Williams. They each received £7.75.

Keep Fit

Thank you to those who responded to the recent Keep Fit survey. The results showed that there is sufficient interest in a keep fit activity and we are pleased to announce that a yoga class is returning to the village in 2019. Supported again by Fit Villages, a new Monday evening class will be starting with a free taster session on 14 January. Our tutor this time is Catherine Wager, who moved into the old Baptist chapel in the village with her fiancé Miles earlier this year. Catherine is a British Wheel of Yoga (BWY) student teacher, currently undertaking the BWY Diploma in Teaching Yoga (500 hours).

Catherine says: "I'm excited about being able to help people take some time for themselves to experience some of the benefits of yoga, both on and off the mat. With all of us tending to lead increasingly busy lives, a yoga class can be an oasis in our week, allowing us some much needed space to reconnect with our bodies and our minds. I aim to make the class accessible to all, so whatever your starting point, it would be lovely so see you on Monday evenings in the new year."

For more information or to book your place on the free taster session, please contact Catherine on 01449 771338 or 07790 842432, email: catherinewager@hotmail.com.

Mary Preece

Possibly the best village in the world.... Well we think so!!

Thank You to all our wonderful friends in the village for their super concern and love shown in various ways during Sally's recent battle with illness. Hopefully we are nearly there...

Rob & Sally Nurton.

News from your District Councillor - John Matthissen

Representing Onehouse, Great Finborough, Buxhall, Harleston and Shelland

Locality Grants for village organisations and projects

I have had some applications, but there is still a good proportion of my locality budget available to be used for any project in the villages which will benefit the community. Please get in touch with me soon if you have something in mind.

Scam alert

Banks clarify that they will never contact you and ask you:

- for your PIN, or password
- to log into internet banking and transfer money, either between your accounts or out of your accounts.
- they will also never ask you to move funds into a 'safe' account on the premise that your account has been compromised – this is a typical story used by fraudsters to encourage you to transfer funds or pressure you into giving them access to your account;
- for your card details over the phone.

In addition, the police or HMRC will never call you and ask you for any of the above details or for you to make transfers. Neither will your internet service provider phone to ask you to install specific software onto your computer.

Tree for Life scheme

A Green Party initiative funded from MSDC's 2018/2019 budget, the scheme encourages the planting of a tree for new born and newly adopted children. All families within Mid Suffolk who have received a new family member between 1 January 2018 and 31 December 2018 are welcome to apply for a free tree to celebrate a new life or adoption. The scheme aims to encourage the planting of trees and promote the benefits which trees bring to communities. Details and an application form can be found at:

<https://www.midsuffolk.gov.uk/news/mid-suffolk-offers-new-arrivals-a-tree-for-life/>

No more plastic milk bottles?

Although Mid Suffolk is still recycling plastic milk bottles, an environmentally friendly option is to have your milk delivered. This is now **all** in glass bottles, which can be rinsed and left out for collection and reuse by the dairy. The milk tops are aluminium foil, and I keep a foil takeaway container by the sink to collect these, rolling it into a ball when full. Via the green bin, aluminium is the most valuable material we can recycle.

Season's greetings to everyone – **John Matthissen**

HENRY'S HOUNDS



Dog walking, house drop ins and house sitting

If you're at work or going out all day and your dog(s) need walking or even just letting out for a half hour break, then I can help.

- Use of 10 acres of securely fenced fields in Buxhall for off lead walks in a safe environment, ensuring plenty of exercise and maximum enjoyment
- Drop ins include letting dogs out to relieve themselves, a little playtime plus refreshing water bowls and feeding if required
- House sitting if you're out for the night or away on holiday
- CRB checked and insured

Please contact me to discuss your requirements or find out more details Henry Alexander: 07923 371164 | henry@henryshounds.co.uk
www.henryshounds.co.uk | Facebook: henryshounds94

Great Finborough & District Garden Club

The winter still has not arrived, so until we get some decent cold weather the remaining clear up jobs are still on hold and the relaxing time of the year is still ahead of us.

Our November meeting was an illustrated talk by Peter Skeggs-Gooch from Thorncroft Clematis nurseries. His beautiful photographs showed us that it is possible to have clematis flowering right throughout the year in a great variety of forms and colours.

The next meeting will be our Christmas party, to be held on the 6 December. As always this takes the form of a light-hearted quiz, with nibbles and mulled wine, and not forgetting the now renowned "Pass the parcel". Please ensure that you have returned the December function slip to Judith, so we know how many will be attending, e-mail or a telephone call will do if necessary. Please note that the venue will be the Main Hall and that it will start at 7pm.

In January gardeners hibernate or go on holiday so as not to waste those valuable hours in the garden later in the year. As a result, the first meeting of 2019 will be on Thursday 14 February at the usual time of 7.30pm in the Pettiward Hall. Our speaker on that evening will be James Blake who will be taking us "Around the World in 80 plants". James is the Head Gardener at Bressingham and will be looking at the wide range of plants that can be grown in this country, where they come from and how to get the best out of them.

Finally, if you are interested in joining the garden club or would like to join us for any event you will be very welcome. Membership is only £15.00 per household per year or £2.50 for a single meeting. For further information contact **Judith Cameron** on 672978 or judyandian@btinternet.com.

Merry Christmas and a happy New Year from the Garden Club

Zumba Class every Thursday 7pm at Hitcham Village Hall

Fancy improving your fitness levels, making new friends, having a weekly social event with friends and family? Come along to my Zumba class at Hitcham village hall. This class is open to anyone, it is an inclusive class and does not matter how old or fit you are or whether you have done a dance class before. The class is £5 a session and will last for roughly 45 minutes, including a range of different rhythms.

My name is Lucy Brinkley and I am a certified Zumba instructor, if you have any question contact me by email: brinkleylk@gmail.com or find me on Facebook. I look forward to dancing with you on Thursday evenings.

Lucy Brinkley

Buxhall and Finborough over 60s, Candlestick Club

The final meeting of 2018 before the Christmas lunch turned out a very interesting and informative afternoon. Peter Green from Harleston showed us some film of lovely gardens around the country, and then Arthur kindly showed us films and demonstrations of the use of the defibrillator; the defibrillator is on the wall by the front door of the Village Hall, to be used in an emergency by anyone.

The Christmas lunch has been arranged for 6 December at the Cedars Hotel in Stowmarket. Meet at 12.00pm for a sit down at 12.30pm. a coach has been arranged to pick up at Buxhall Village Hall at 11.30am then onto Great Finborough, Onehouse Road and on to the Cedars. Return trip will be when we are ready.

The opening meeting of 2019 has been arranged for Thursday 4 April at 7.00pm. we have already arranged one or two outings for 2019 starting with an excellent mystery trip on 2 May. Put these dates in your diaries.

I would like to wish all our members a happy Christmas and a healthy New Year. New members are always welcome. **Keith (736598)**



Great Finborough Primary School

Lots of activity at the Primary School during this Autumn term. Recently the older boys and girls took part in a Rugby Tag Festival held at Stowmarket Rugby Club. This was against other schools in the area and even though we drew in the final, our team won overall on points scored, well done to all involved. The school has also started training for the very popular Coast to Coast cycle event held every 2 years, taking them from the West to East of Northern England covering many, many, many miles! At the moment training is within the school and Finborough but more to follow on this as Mr Dodd turns up the heat!

We have recently held an election for a Parent Governor as Ben Thomas came to the end of his first term. Other parents expressed an interest in taking this position but Ben who put his name forward again, was re-elected, welcome back Ben. Many of you will know that Sally Burns has now moved from the village. She played a massive role in the school running the gardening club, tending the gardens as well as her position on the Governing body, we wish her and her family all the best with their move.

As mentioned in my last article, the school had its open event at the end of October for prospective parents to look around. We had a great turn out and the Year 6's did a sterling job showing people around, clearly very proud of their school. As well as many attendees on the night we have since had a number of bespoke viewings. If you would like to take the opportunity please contact Mrs Harriet Ellis at the school to arrange a visit.

As always, we are looking at opportunities to raise much needed funds for the school as well as any help parents and locals can give. Many local employers have CSR policies where they look to support local causes, if you work for or know of such companies we would love to hear from you. For example, staff from Akzo Nobel helped decorate one of the classrooms over the summer.

Finally, a last reminder for our Xmas Fair to be held on Saturday 1 December between 12.30 and 4pm. If anyone can help with their time or donating raffle prizes, again please contact Mrs Ellis at the school. This is a very popular event involving both staff and students so please come along, have fun, shop and support the school. **Anthony Mann**



From Onehouse Rectory December 2018

Even as a child, I loved walking along the darkened streets in autumn and winter and seeing light streaming out from some of the houses I passed. Sometimes, I could see some of the families who lived in those homes or their pictures hanging on the walls or other familiar objects around them – glimpses of life amongst the darkness. Pubs with bright lights and full of chatting people; shops with busy people intent

on their purchases; sometimes the light streamed out of stained-glass windows belonging to a church.

Light and darkness fascinated me and one of the earliest memories I have is being taken by my parents to a nativity play in the Minster Church in the centre of Reading. The smell of incense and the flickering candles, the carols and the re-enactment of the familiar story of Jesus' birth gave me peace.

In Hertford, the Roman Catholic Church of St. Joseph has a very special crib. Its impact depends on the very clever use of light and darkness for it depicts St. Andrews Street in Hertford itself on a dark night with the houses, shops and pubs lit up and people inside going about their business. In one of the rooms above the pub, the priest can be seen celebrating mass when there was not yet a church to use and in another quieter spot Mary, Joseph and the new-born Jesus.

It is an incredibly powerful scene and most people who see it are "bowled over" by it, because they can recognise some of the shops and houses and the message becomes so clear – in the midst of ordinary life, God sent His only Son, Jesus. A wonderful gift from the God who is love and who sent Jesus to live a life of sacrificial love which would result ultimately in His death, yet Jesus would rise from death showing us that nothing, not even death, can separate us from God's love.

A message of light amongst the darkness and one which we will be celebrating in all our churches during the next few weeks leading up to Christmas Eve and Christmas Day and on to the New Year to come.

There will be special coffee mornings; Christingle services ["Christ Light" oranges, lights and sweets]; Carol Services; Community Carols;

Worship Services; Follow the Star and Communion Services all on offer for everyone to attend to celebrate and usually accompanied by the most delicious refreshments! Please keep a look out for the adverts in notices, magazines, on Facebook and websites and invite someone along. We hope that as many people as possible will come and be drawn to the light shining in darkness. St. John calls Jesus "the Word" and declared "The Word was the source of life and this life brought light to mankind. The light shines in the darkness, and the darkness has never put it out." [St John Chapter 1 verses 4 & 5].

Come and celebrate this special time of year when we remember that God intervened in history, because He thinks we're worth it! Light shines in the darkness and the darkness cannot put it out.

Have a very blessed Christmas and a peaceful New Year.

Revd. Pauline

Around the parishes

Friday 7th December 3.30-5pm St Andrews Gt Finborough

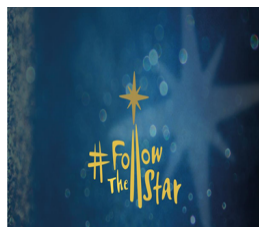


Calling all children - no matter how young. Come and join us for a fun time of crafts, games, songs, activities, stories ... Drink and biscuit on arrival; sandwich tea to finish. There is no charge, and no need to book; just turn up - but do remember to bring an adult

with you! (This event is best suited for children up to approximately 9 years old)

Onehouse and Harleston: Follow the Star

Children look out for the knitted stars in people's houses and make a note where they are. A special letter is being delivered to each house explaining and the award ceremony for the most found will be at the Carol Service on 15 December at 6pm
Enquiries to Canon Pauline



CHRISTINGLE services are

9 December 3pm at St Mary's Combs and St Andrew's Gt Finborough

16 December 9.30am St Augustine's Harleston

13 January 11am St John Baptist Onehouse



This is a service especially suited to children – all ages enjoy it too.....proceeds are to The Children's Society

Epiphany

We remember the arrival of the three Kings – will be specially celebrated in both Finborough's with a Songs of Praise and Royal Tea at Gt and the traditional procession from the Punch bowl to church followed by a service and tea at Lt. Both services are suitable for All Ages.

Plough Sunday at Buxhall

For some years we have celebrated with the Blessing of the plough being the traditional start of the farming year. Ploughing is long finished but it symbolises the beginning of food production brought to fruition at Harvest. Come and help us bless the plough with local farmers at this special service.

Men's Breakfast Saturday 12 January 2019 Trinity Hall 8am – speaker tba

Shelland Church will be celebrating the feast day of their patron Charles the Martyr King, on Sunday 27 at 4.30pm with a Songs of Praise and we hope many will be able to join in and share the tea afterwards.

New Faces I am sure you will all join me in welcoming **Gini Williams** from Eye for an extended training placement with us from November. She joins **Lesley Norburn** of Gt Livermere whom many of you have

got to know. Both ladies are due to be ordained deacon in the Cathedral at the end of June and come here at the request of Bishop Martin to learn, reflect and share in the work that the Ministry Team undertake with Pauline and me.

Wednesday Morning Holy Communion at Onehouse is in Trinity Hall for January and February

Wholeness and Healing

This ministry operates within the church already and a new Group has been formed to develop it more. More information from Revd's Alison Chris or Canon Pauline.

THANK you for all the hard work associated with the Remembrance Displays especially in Buxhall, Gt Finborough and Combs. We achieved record attendance across the parishes with almost 550 at our services on the day. Each was very moving. THANK YOU to all those who worked so hard for the Confirmation service on the 4 November at Combs, 130 adults and 21 children made the church look nearly full. THANK YOU to all those who worked for our Remembering the departed service at Gt Finborough. We needed extra chairs for this increasingly popular service

Rev Michael Skliros RIP

Michael died on Wed 31 October in Northampton General Hospital. He was an assistant priest in Stowmarket in the 1980's before becoming Priest in Charge of Gt Finborough with Onehouse and Harleston for 9 years from 1985. Many of us remember Michael fondly. He was a man of great character, style and strong views that were perhaps before their time. His memorial service will be in Kettering Parish Church on a date tba. We remember his wife Inga and his children Helen and John.

Rev Chris

Parish Register for Gt Finborough



Confirmation

Timothy John HINES

On Saturday 15 December there will be Community Carols in the Community Centre, Forest Road, Onehouse at 6pm. The Salvation Army Band will be there to encourage us with the singing! Mulled wine and mince pies will follow the service. There are dressing up clothes for the children to join in the Christmas theme. Come along, it is always a very special get together.

The Crib Service at Onehouse Church is on Christmas Eve at 3pm. Remember to bring your torches!

The Onehouse shortened Communion service on Christmas morning is at 10.30am. Look forward to seeing you there.

Carole Hearn

Coffee mornings

Christmas Coffee morning at Chestnut Horse, Tuesday 11 December from 9.30 – 11.30am. Special Christmas raffle, games and delicious mince pies. £1.50 cake and tea/coffee plus free refill. Everyone is welcome.

Helen our Avon lady will be there
Charity is St Andrew's Church.

Community coffee morning at Chestnut Horse on Tuesday 8 January from 9.30-11.30. £2.00 cake and tea/coffee plus free refill.

Everyone welcome.

Charity Stowmarket Foodbank and St Andrew's Church.

Stretch your vocal chords and help raise funds for local hospice. A local charity is on the hunt for fundraisers willing to stretch their vocal chords and help raise vital funds while having some tuneful fun in the lead up to Christmas. In a bid to make sure festive spirit is spread far and wide this year, St Nicholas Hospice Care is hoping as many people as possible will lend their voices to its new fundraiser 'Carolling All the Way'.

*because
you matter*

St Nicholas
Hospice Care

A Registered Charity No. 287773

To help make the occasion a success the Hospice needs people who love a sing-song to come together and sing their way around their communities over the weekend of 14 to 16 December.

Alison Bacon-Snow, the Hospice's lottery manager and event organiser, said: "I want this to be a really fun fundraiser that everyone feels they can be part of, It doesn't matter if you're already part of a choir or just someone looking to have some fun fundraising at Christmas, this will be a friendly occasion packed with community."

No audition is necessary, and people can sign up as groups (of any size) as well as individuals. By taking part, fundraisers will be helping to make a huge difference to the lives of local people, as all funds raised will help support the hospice's services across West Suffolk and Thetford.

It costs £5 per person to take part and fancy dress (Christmas jumpers, steampunk or period costume) is optional.

For more information visit <https://stnicholashospice.org.uk/news-community/events-listing/carolling-all-the-way/>

Please contact Jeanette Threadgold on 01284 715580

Anything Suffolk Online Gift Shop

www.anythingsuffolk.co.uk showcases over 50 local artists and photographers, celebrating the rich life and landscape of our beautiful county. This new online shop sells Suffolk themed fine-art prints, calendars, books and gifts. These are ideal Christmas gifts for any lovers of Suffolk. There is also an image gallery and information about the contributors.

Gipping Press Ltd, the company behind AnythingSuffolk, have worked with local artists for many years; scanning and reproducing fine-art prints that are faithful to the originals. Now anythingsuffolk.co.uk has a library of over 200 Suffolk pictures online and the number is growing. No original artwork is sold but each reproduction is uniquely numbered, embossed and beautifully presented.

There is also a variety of other Suffolk printed products available with more to be added to the collection in 2019.

We invite all local artists/ photographers to submit images for publishing to anythingsuffolk@gippingpress.co.uk. Commission will be paid for any work sold. This image library is unique collection and the site will be promoted further throughout 2019.

Thank you for your interest in www.anythingsuffolk.co.uk. We hope you enjoy browsing, celebrating your home county and supporting talented local contributors.

Gipping Press Ltd

Farewell to Simon the Postie

Many of our readers will be aware that following the news that Royal Mail was intending to transfer Simon, our village postie, a campaign was launched by the village to try to overturn this decision. The Parish Council sent a letter to Royal Mail management that was followed up with a petition containing over 160 signatures from local residents.

Sadly, the Royal Mail, as expected, ignored the views of its customers and implemented its original decision at the end of October. The local area manager being keen to stress that all their delivery staff receive the same training. Whilst that may be true it overlooks the personal traits of an individual, which is what made Simon so special to us. We remain hopeful that our new postie does indeed provide the same service with a smile, we received from Simon.

The collection organised by Simon T and Tim Hines raised a staggering £260. This was used to purchase a case of the finest Claret, Simon's favourite tippie. Simon and his wife were invited to the Autumn Supper as guests of the village where a few words of thanks were spoken, and he was presented with the wine. It was a very moving occasion and once again showed the high esteem which villagers feel for Simon. He was part of our village and hopefully we will continue to see him at village events in the future.

Simon has now started his new round and we wish him well; our loss is their gain! Many thanks to everyone who took the time to sign the petition and make their views known. Simon was genuinely touched by the many comments. The letters to and from Royal Mail are available to read on the village website, www.greatfinborough.onesuffolk.net

Tracy Barnett

Providing Personal Care in your own Home



Recruiting
NOW!
We need
exceptional
people who
love to
care

Do you need help with:

Personal Care
Dementia Care
Respite Care
Help Around the
House
Day Trips Special
Occasions

Request a
Brochure or book
an appointment
on 01449 763086
or 01284 711845



We only employ people who love to care.


Supporting Independent Living

www.mycare-athome.co.uk

Tank Change Limited

Does your Oil Tank need replacing?
We are your local oil tank installer established
since 1989 with over 16,000 installations to date

- New oil tank installations, relocations and servicing
- Emergency pump out service available for leaking oil tanks
- Kingspan Titan polyethylene tanks and steel tanks held in stock
- OFTEC registered
- Kingspan Titan Accredited
- Fully insured
- Parish magazine discount
- Free surveys

Tel. 01449 781210

Email: enquiries@tankchange.co.uk

www.tankchange.co.uk



Registered
Business



CHESTNUT HORSE

01449 674688

The Chestnut team can ensure you of a very warm welcome.

With a great choice of Real Ales, Lagers, Guinness, Wines, Spirits & Soft Drinks.

Opening Hours:

Wednesday to Sunday - 12 Noon to 11pm

Monday and Tuesday - Closed

Food served all day from 12.30 – 9pm

New Lunch, Dinner & Takeaway menus available

Sunday Food From 12 noon – 6pm

See our display boards for special meal deals.

FUNCTIONS CATERED FOR HOME & AWAY.

Quiz night every 3rd Thursday 8pm

Non-members Wild Bird Seed

The next order will be placed on 20 November and will be available for collection from Abbey Farm Cottage, Buxhall Rd. Great Finborough after **10-00am and before 6.00pm on Wednesday 6 February 2019.**

If you would like to place an order please let me have your requirements together with a cheque to "Great Finborough Garden Club", it is also essential that I have your telephone number so that I can advise you if there is a problem with seed collection on the 5 December.

Orders may be posted to or dropped off at The Little House, High Road, Gt Finborough (IP14 3AA), or if it's more convenient dropped off at 1, Valley Lane, Gt. Finborough and **must be received by 20 January 2019.**

Name

Tele No.

Product	Weight	Price	
Wild Bird Mix	20 kg	£10-50	
W.B.M. Premium	20kg	£12.00	
W.B.M No Wheat	20kg	£14-50	
W.B.M NEW High Energy	12.75 kg	£12-50	
W.B.M. No Mess	12.75 kg	£13.00	
W.B.M Robin & Songbird	12.75 kg	£13-00	
Finch Mix	20 kg	£12.00	
Mixed Corn	20 kg	£8-50	
SUPER Poultry Mix	20kg	£9-50	
Peanuts (superior quality)	25 kg	£33-00	
Peanuts (half sack)	12.5 kg approx.	£17-50	
Black Sunflower Seed	12.55 kg	£10-50	
Sunflower Kernels	20 kg	£22-00	
Sunflower Kernels	10kg approx.	£12-00	
Nyjer Seed	20kg	£26-00	
Nyjer Seed	10kg approx.	£13-50	
Suet Pellets	12.75kgs	£17-00	
Fat Balls (any quantity)	Price each	11p	
		TOTAL	

Orders not collected on the day will **require customer to make special arrangements to collect.** The next seed order will be April 2019.

Peter Turner

FINBOROUGH FILM NIGHT



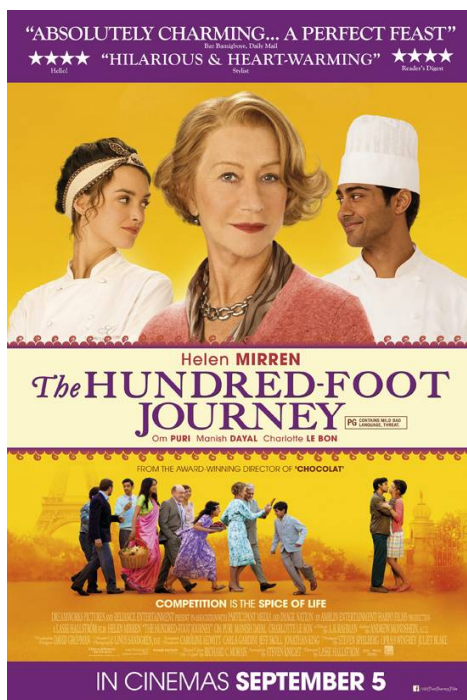
'Mamma Mia! Here We Go Again' (PG) **Pettiward Hall**

Wednesday 19th December 2018 at 7.00pm

- Come early for complimentary Mince Pies & Mulled Wine
- Tea & biscuits in the interval
- Tickets: Adults £5 Children (under 16) £3
- Tickets can be purchased on the door.

For more information please contact **Norman** on 07930 338580

FINBOROUGH FILM NIGHT



'The Hundred-Foot Journey' (PG)

Pettiward Hall

Wednesday 16th January 2019

- Screening commences at 7.00pm
- Complimentary tea & biscuits in the interval
- Tickets: Adults £5 Children (under 16) £3
- Tickets can be purchased on the door.

For more information please contact **Norman** on 07930 338580

HIGH FLYERS

EQUESTRIAN & COUNTRY CLOTHING



ARIAT®



dubarry®
of Ireland

Schöffel



FAIRFAX & FAVOR
ENGLAND



AIGLE

MUSTO®
PERFORMANCE



*We also stock a selection of Horse Feed/Bedding/Supplements,
Dog Food, Bird/Chicken Feed*

HIGHFIELDS FARM, BATTISFORD, STOWMARKET, SUFFOLK IP14 2HL

TEL: 01449 722122 • WWW.HIGHFLYERSCLOTHING.CO.UK

HIGH FLYERS SELF-STORAGE

20' X 8' X 8' CONTAINERS (1,172 CU.FT)

AVAILABLE
FOR RENT

HIGHFIELDS FARM, BATTISFORD,
STOWMARKET, SUFFOLK IP14 2HL

TEL: 01449 722122

WWW.HIGHFLYERSCLOTHING.CO.UK

A & C Fencing & Landscaping.

Fence erection - Landscaping - Patios and sleeper walls - Shed bases laid & sheds erected - Lawns & grass areas up to 4 acres cut - Hedge cutting - Driveways - General garden maintenance - Any small building projects.

Free no obligation quotes contact Andrew Wade.

07748785197 or 01449674093 or email

wade.andrew63@gmail.com



**Professional Tree Surgeon and team
that can maintain your gardens big or small**



Trees & Hedges

Felled, Pruned, Shaped, Dead / Broken & dangerous hanging branches removed to make them safe.

Hedges cut and maintained to your specification

Gardens

Lawns cut, Borders trimmed, Shrub beds cleaned

Ground Clearance

Large or small areas of scrub cleared and removed

Fences

Panelled. Wired, Post & Rail, Erected or Mended

Free, no obligation, quotations

01449 720157 / 07788590779

james.firman@treesandfences.com / www.treesandfences.com

BARGEWELL SKIP HIRE

2, 3, 4, 5, 6, 7 & 8 yard skips

Long or short term hire

Delivery service 7 days a week

Fast friendly service

Stowmarket 01449 615056

Mobile: 07770 452378

High Rd, Gt Finborough, Suffolk

www.bargewellskiphire.com

Credit cards accepted

TOMLINSON GROUND CARE

Horticultural & Garden Machinery Suppliers

Sales • Service • Parts • Repairs

1 Brettenham Road
Buxhall, Stowmarket, IP14 3DL
www.tomlinsongroundcare.co.uk

01449 736060

Opening Times

Mon– Fri 7.30 am to 5.00 pm

Saturday 7.30 am to 12.30 pm

Visit our LARGE SHOWROOMS



This advert is too small to be able to show you all we have to offer, please visit our website or come and have a cup of tea/coffee and discuss your requirements.

Main Al-Ko and John Deere Dealers,
over 15 ride-on and 25 walk-behind mowers to **Try before You Buy**

ARBORICULTURAL AND LANDSCAPE SOLUTIONS

ALL ASPECTS OF TREE SURGERY
SOFT AND HARD LANDSCAPING
MAINTENANCE AND LAWN CARE
DOMESTIC & COMMERCIAL CONTRACTS
FULLY INSURED
NPTC QUALIFIED



GREEN SCENE

CONTACT FOR FREE QUOTATIONS AND ADVICE

01359 298141 / 07866 866880

INFO@GREENSCENETREESURGERY.CO.UK



Andrew Bingham

INDEPENDENT FUNERAL SERVICE

Local Caring Independent Funeral Service

24 Hour Personal Service * Private Chapel * FREE Parking

www.andrewbingham.co.uk

01449 771666

The Nutshell, Milton Road South, Stowmarket, IP14 1EZ



Golden Charter
Funeral Plans



**Are you looking for a high-quality decorator?
Look no further!
Service with a smile, for all your decorating needs!**

Honest, reliable service
Clean and tidy

Claire Marks

Tel: 07895 277357

Email:
Claire.marks@housetohomedecorating.co.uk

Web: www.housetohomedecorating.co.uk

*Fed up of running around
after your car?*

Why not give us the inconvenience
– it's part of our service

WE COLLECT & DELIVER

Servicing, Welding,
MOTs arranged
Air-conditioning recharged
General Repairs –
shocks, clutches, brakes etc
All work guaranteed

S & P Motocare

Est 1990

Contact: Shane
Tel: 01449 771102 or 07802 545737

***Personal Service at
Competitive Rates!***



REWTS
Tree & Garden



- Qualified tree surgeon & horticulturist
- Making gardens beautiful for 13 years

Honest reliable service offering:

- ☐ **Tree surgery:** from light pruning to large tree removal.
- ☐ **Garden landscaping:** from small back gardens to large estates.
- ☐ **Garden maintenance:** from a little weeding to a major clearance.

**Qualifications & portfolio
available for viewing**

Call **REWTS** on 07825253720
or

Email: rewtsgardening@yahoo.co.uk

CHIMNEY SWEEP

ECO SWEEP CHIMNEY SERVICES

- NEW POWER SWEEPING METHOD USED FOR A MORE THOROUGH CHIMNEY CLEAN THAN BRUSHES.
- INDUSTRIAL HEPA FILTERED VACUUM.
- FULLY INSURED.
- INSURANCE RECOGNIZED CERTIFICATES ISSUED.
- SPOTLESS, RELIABLE AND FRIENDLY SERVICE.
- ALL CHIMNEYS, WOOD BURNERS, AGA, BOILER FLUES SWEPT.
- GUILD OF MASTER SWEEPS CERTIFICATED MEMBER.



TEL. 01359 232335

Gardener

Tackling tasks, offering guidance & advice
Herbaceous, Shrub & Rose management
Lawn & Hedge maintenance
Planting - Design - Installation
High standard of work, references & portfolio
Weekly - One-off - Seasonal tasks
Hand-crafted Horticultural Supports
Combs, Stowmarket, Suffolk
Fred Waters - 07788 523146



Charisma Hair
01449 677202

86a Forest Road, Onehouse
charismahair.co.uk / 01449 677202

- Full range of styling and colouring
- OPU manicures including gel polish
 - Eyebrow tint and shape

(Closed on Mondays and Tuesdays)

Goode Shepherd Huts

Hand crafted to your design



www.goodeshepherdhuts.co.uk

Call Tom: 07789 330 422

The Old Stack Yard, Forward Green, Suffolk, IP14 5HU

We also work with oak: www.suffolkoak.co.uk



MILES ROLFE JOINERY

Production, Design & Fitting of All
Aspects of Joinery & Furniture

Gt. Finborough • Suffolk

07880 776845 mobile
mrjoinery@live.com

01449 771338 evening
milesrolfejoinery.co.uk

 Follow me on Facebook

CHURCH SERVICES FOR DECEMBER 2018

2 December: Advent Sunday

9.30 am	Sung Eucharist	Buxhall
9.30 am	Morning Worship	Shelland
11.00 am	Holy Communion (by extension)	Great Finborough
11.00 am	Holy Communion	Onehouse
11.00 am	Worship and Messy Church	Combs
3.00 pm	Evensong	Little Finborough

9 December: The Second Sunday in Advent

9.00 am	Holy Communion	Little Finborough
9.30 am	Holy Communion	Harleston
9.30 am	Matins	Buxhall
11.00 am	Holy Communion	Combs
11.00 am	Morning Worship	Onehouse
3.00 pm	Christingle	Combs
3.00 pm	Christingle	Great Finborough

15 December: Saturday

6.00 pm	Carols at the Community Centre	Onehouse
---------	--------------------------------	----------

16 December: The Third Sunday in Advent

9.30 am	Holy Communion	Shelland
9.30 am	Christingle	Harleston
11.00 am	Holy Communion	Onehouse
11.00 am	Carol Service	Combs
4.00 pm	Village Carols	Buxhall
4.00 pm	Village Carols	Great Finborough

18 December: Tuesday

7.00 pm	Carol Service	Little Finborough
---------	---------------	-------------------

23 December: The Fourth Sunday in Advent

9.00 am	Holy Communion	Little Finborough
9.30 am	Holy Communion	Harleston
10.30 am	Carol Service	Shelland
11.00 am	Holy Communion	Combs
6.30 pm	Nine Lessons and Carols	Buxhall

24 December: Christmas Eve

3.00 pm	Crib Service with carols	Buxhall
3.00 pm	Crib and Nativity Service with carols	Combs
3.00 pm	Crib Service with carols	Onehouse

4.00 pm	Crib Service with carols	Great Finborough
4.30 pm	Carol Service	Harleston
6.00 pm	Holy Communion with carols	Combs
11.30 pm	Holy Communion with carols Higham	Great Finborough

25 December: Christmas Day

9.00 am	Holy Communion	Little Finborough
9.30 am	Family Communion	Shelland
10.30 am	Family Communion	Buxhall
10.30 am	Family Communion	Onehouse

30 December: First Sunday of Christmas

9.30 am	Benefice Holy Communion	Harleston
11.00 am	Morning Worship	Combs



CHURCH SERVICES FOR JANUARY 2019

6 January: Epiphany

9.00 am	Holy Communion	Little Finborough
9.30 am	Sung Eucharist	Buxhall
9.30 am	Morning Worship	Shelland
11.00 am	Holy Communion	Great Finborough
11.00 am	Holy Communion (by extension)	Onehouse
11.00 am	Worship & Messy Church	Combs

13 January: Epiphany 2, The Baptism of Christ, Plough Sunday

9.30 am	Holy Communion	Harleston
9.30 am	Plough Sunday Service	Buxhall
11.00 am	Holy Communion	Combs
11.00 am	Christingle	Onehouse
4.00 pm	Epiphany Songs of Praise	Great Finborough
2.00 pm	Epiphany Procession and service	Little Finborough

20 January: Epiphany 3, The Second Sunday after the Epiphany

9.00 am	Holy Communion	Little Finborough
9.30 am	Holy Communion	Shelland
11.00 am	Family Communion	Combs
11.00 am	Holy Communion	Great Finborough
11.00 am	Morning Worship	Harleston
6.30 pm	Evensong	Buxhall

27 January: Epiphany 4, The Third Sunday after the Epiphany

9.30 am	Holy Communion	Buxhall
9.30 am	Holy Communion	Harleston
11.00 am	Holy Communion	Combs
11.00 am	Holy Communion	Onehouse
11.00 am	Morning Worship	Great Finborough
3.00 pm	Evensong	Little Finborough
4.30 pm	Patronal Songs of Praise	Shelland

We meet for

Midday Prayer 12.00 noon on Tuesday at St Mary's Buxhall

Holy Communion 9.30 am on Wednesday at Trinity Hall Onehouse

Evensong Prayer 4.30 pm on Thursdays at St Andrew's Great
Finborough

Morning Prayer 10.00 am on Saturdays at St. Mary's Combs (Lady
Chapel)

Great Finborough Mobile Library Service 2018/19

Oak Close 4.10pm to 4.30pm Fridays as follows:

21 December



F. G. BROWN – OPTICIANS

Denmark House, 41 Bury

Street, Stowmarket.

Tel: 01449 612812/674030

As independent opticians we offer a more personalised eye care
service that you can trust for all the family

Professional Eye care – Quality Products – Personal Service

Opening hours:-Tuesday-Friday 9.00 am – 5.30 pm
Saturday 9.00 am – 5.15 pm

Your sight care is our priority

WHO'S WHO IN GREAT FINBOROUGH

Chair, Parish Council	Peter Turner	674407
Clerk, Parish Council	Paula Gladwell finboroughparishclerk@gmail.com	01284 828112
District Councillor	John Matthissen councillor@matthissen.net	258894
County Councillor	Penny Otton penny.otton@councillors.suffolkecc.gov.uk	737870
Newsletter Editor	Simon Tarabella simon.tarabella@great-finborough.suffolk.gov.uk	672072
Priest in Charge	Rev. Chris Childs <i>Combs Rectory, 135 Poplar Hill, IP14 2AY</i> revcchilds@aol.com	673280
Associate Priest	Rev Canon Pauline Higham <i>The Rectory, Onehouse, IP14 2AY</i>	771791
Church Warden	Tim Hines	775525
Church Warden	Sadie Watts	612397
Pettiward Hall Management Committee	Mary Preece	771360
Lettings/Keyholder	mary.preece1@btinternet.com	Great
Finborough & Buxhall Under 5s	Delia Prior delia@gfbunderfive.co.uk	07513 140072
Great Finborough & Buxhall Brownies	halo.durrant@gmail.com	
Allotments Association	Mary Smyth	672533
Candlestick Club	Keith Proctor	736598
Great Finborough & District Garden Club	Judith Cameron judyandian@btinternet.com	672978
Chestnut Horse Pub	David & Jade Lewis	674688
Buxhall Women's Institute	Judith Hickman	677540
Head teacher, Great Finborough	Stephen Dodd	613208
Primary School	headteacher@greatfinborough.suffolk.sch.uk	
Police (Stowmarket SNT)	Stowmarket.snt@suffolk.pnn.police.uk	101
Stowmarket High School		613541
Stowmarket Health Centre		776000
Combs Ford Surgery		678333
Stowmarket Library		613143
Village website: www.greatfinborough.onesuffolk.net		
Church website http://www.standrewsgtfinborough.co.uk/		
Primary School website: www.greatfinborough.suffolk.sch.uk		