

GREAT FINBOROUGH NEWSLETTER



**March 2019
ISSUE 496**

VILLAGE DIARY – March

4	6pm	Brownies, Pettiward Hall
4	8pm	Yoga, Pettiward Hall
9	8am	Mens Breakfast, Pettiward Hall
11	6pm	Brownies, Pettiward Hall
11	7.30pm	Parish Council, Pettiward Hall
11	8pm	Yoga, Pettiward Hall
13	7pm	Film Night, Pettiward Hall
14	7.30pm	Garden Club, Pettiward Hall
15	4.10pm	Mobile Library, Oak Close
18	6pm	Brownies, Pettiward Hall
18	8pm	Yoga, Pettiward Hall
25	6pm	Brownies, Pettiward Hall
25	7.30pm	Pettiward Hall AGM, Pettiward Hall
25	8pm	Yoga, Pettiward Hall

VILLAGE DIARY – April

1	6pm	Brownies, Pettiward Hall
1	8pm	Yoga, Pettiward Hall
8	7.30pm	Parish Council, Pettiward Hall
10	7.00pm	Film Night, Pettiward Hall
11	7.30pm	Garden Club, Pettiward Hall

Zumba class, Pettiward Hall, every Tuesday 11am, every Thursday 7pm

PARISH COUNCIL MEETINGS 2019

11 March, 8 April
7.30pm in Pettiward Hall

The Newsletter is produced by Great Finborough Parish Council, printed by Gipping Press, and distributed to all households in the village free of charge. Claims made have not been verified. For these the newsletter disclaims responsibility.

Editorial

Firstly, may I apologise to all village residents who have tried to use the mobile Post Office services that I recommended in my editorial last month. The official response from the PO is that they are still trying to overcome ongoing technical issues and that they hope to have the service up and running very shortly. We will endeavour to keep you up dated by posting on the village notice board and the "Nextdoor Great Finborough" site.

This month sees the start of the yearly AGM's for the various organisations in the village and the call for volunteers to sit on the committees to help run these important village bodies. The Pettiward Hall management committee, the Parochial Church Council and the Parish Council all have vacancies that need filling so if you are interested please have a chat with a current member of the organisation. There is also a need for more volunteers to help out with speedwatch and the film nights so if you have a few hours of your time to spare why not come forward and help make the village more enjoyable for all.

The Yoga classes have been very well attended to date and I am pleased to report that there are now Zumba classes running twice a week in Pettiward Hall, Tuesdays 11am and Thursdays 7pm, why not pop along and see what it is all about!

A warm welcome to the new residents of Lime Tree House, Sharon Hall, Stuart Chittock and Lucy, Chris, Elliot and Georgie Parkin

The 15 March is the deadline for inclusion for the April issue of the Newsletter, so please contact Simon Tarabella or Peter Turner, or drop in to Maple Lodge, the kettle is always on.

Simon Tarabella

Great Finborough Parish Council

There was no meeting of the Parish Council in February. As the current term of office for the PC will come to an end in April I thought it would be good to report on the various projects that the PC has overseen in its 4 year tenure.

Clearing, planting and cultivation of a wildflower meadow
Provision of seating, picnic benches and tables around the village
New signage for the car park, Willow Close and Middlefield Drive
Additional dog bins and grit boxes around the village
New safety surfacing for the play area and new swing seats and chains
Provision of a community herb garden
New car parking area for Church Road
Ditch clearance and drainage work Woodpecker Hill
Allotment hedge maintenance
Speedwatch enforcement and provision of new speed gun
Provision of Vehicle Activated Speed Sign
Purchase of redundant BT phone box
Provision of community defibrillator and associated training
Support of Queens 90th birthday celebrations
Carried out public consultation on use of the sports field
Supported and financed the village newsletter
Supported and provided donations to various charities

As well as the above the PC have listened to, discussed and voted on many varied topics and planning applications that affect village life. If you fancy having your say, why not consider standing for election?

Date of the next meeting 11 March, 7.30pm in the upstairs room, Pettiward Hall.

Simon Tarabella



Developing & Delivering your Architectural Dreams

Residential | Commercial | New Build | Listed | Free Initial Consultation

T: +44 (0) 1449 708510 E: tim@timmoll.com www.timmoll.com



DESIGN | PRINT | PROMOTION

Planning an event in 2019?

Give us a call and we would be more than happy to advise and help on postage, signage, flyers, banners and programmes.

Tel: 01449 721599 Email: enquiries@gippingpress.co.uk
www.gippingpress.co.uk

Units 1&2 Lion Barn Industrial Estate,
Needham Market, Ipswich, Suffolk IP6 8NZ

The Pettiward Hall

"Little Ernie"

The February winners were Angela Cuthbert and Doris Riseborough. They each received £7.75. Please consider joining the next lottery which starts on 1 April. Tickets cost £12 which gives you once chance per month from April 2019-March 2020. The income is divided equally – half to our funds and half in prize money – with two prizes of equal value awarded each month. The 2018-19 scheme raised £186 for the hall which contributed to the cost of replacing the bargeboards on the hall roof. This year we hope to replace the hall lighting with LEDs which will be more reliable and cost less to run. Please complete the form below and return it by 28 March to South Lodge (on the corner of the main driveway to Finborough School). I can collect it from you if you'd prefer and can provide another form if you'd rather keep your newsletter intact.

AGM

The AGM of the Great Finborough Village Hall charity will take place in the upstairs room at the hall on Monday, 25 March, commencing at 7.30pm. There will be a vacancy for a trustee this year as unfortunately Lesley Cass will not be standing for re-election for health reasons. If you care about the hall as a valuable community asset and feel you could give a little time to help in its management, please contact me in the first instance for more information.

Vandalism

Unfortunately the allotments were not the only village amenity targeted by vandals over the Christmas period. The hall also suffered mindless damage including to property belonging to the Pre-school.

Zumba

Two new Zumba classes have started at the hall on Tuesday mornings and Thursday evenings. I believe that the Tuesday class is aimed at those that prefer something a little less energetic. For more information please contact the instructor, Lucy Johnston, on 07502464778 or email loosee0001@gmail.com.

I wish to join **The Pettiward Hall "Little Ernie" Lottery scheme** and enclose £.....(£12 per number) for numbers. Cash or cheque payable to **Great Finborough Village Hall** please.

Please print clearly

Name

Address

Email (optional)

Tel No.

I am over 16

Signed Date.....

Mary Preece

Great Finborough Lent Lunch



*Please join us on Wednesday 3 April from 1230 at Maple Lodge,
High Road, the home of Simon and Jacqueline*

Tarabella

You will be most welcome

Your generous donations will go to our chosen charity

News from your District Councillor - John Matthissen

Representing Onehouse, Great Finborough, Buxhall, Harleston and Shelland

Hubert Mitson

Hubert was returned unopposed as the Independent councillor for the Onehouse Ward when Mid Suffolk District Council was formed in 1973. In that role he chaired the Council, and was twice re-elected, finally standing down in 1987. His role in Buxhall village life both before and after this period is beyond comparison, as I understand he was a Buxhall Parish Councillor for 68 years, many as Chairman. A quite exceptional record in public life. He will be missed.

5 year housing land supply

New and more detailed calculations and assumptions have been published for consultation (with the developers) asserting a 5.3 years supply. This is calculated using a new target from Government of 590 homes per year, PLUS 20% buffer because MSDC is currently in default. So 708 homes.

Delay to Joint Local Plan

Together with the 5 year housing land supply, an up to date Local Plan is needed for the Council to properly influence where homes are or are not permitted and built, so a further delay is disappointing. A draft is now expected to be published later this year.

Food Bank

The extra stress of heating bills is pushing more people into debt, and thus being referred to the Food Bank. Please remember an extra tin or packet when you shop, and there are also collecting boxes in the churches and Town Council.

John Matthissen

HENRY'S HOUNDS



Dog walking, house drop ins and house sitting
If you're at work or going out all day and your dog(s) need walking or even just letting out for a half hour break, then I can help.

- Use of 10 acres of securely fenced fields in Buxhall for off lead walks in a safe environment, ensuring plenty of exercise and maximum enjoyment
- Drop ins include letting dogs out to relieve themselves, a little playtime plus refreshing water bowls and feeding if required
- House sitting if you're out for the night or away on holiday
- CRB checked and insured

Please contact me to discuss your requirements or find out more details Henry Alexander: 07923 371164 | henry@henryshounds.co.uk
www.henryshounds.co.uk | Facebook: henryshounds94

Carpentry

Call Tom

0757 900 8271

tom@castellcarpentry.co.uk

Great Finborough & District Garden Club

February has been an odd month weather wise; with many dull and damp days, along with some lovely sunny and warm days, it has been a proper mixture. However, in spite of all that the weather threw at us the spring flowers are now starting to bloom and soon it will be warm enough to get out and about in the garden.

The speaker last Thursday was James Blake who is the Head Gardener at Bressingham. He took us "around the world in 80 plants" looking at the wide variety of plants that can be grown in this country and where they were originally found along with anecdotes about growing them in the conditions found at Bressingham. His talk was both amusing and informative and illustrated with some beautiful plant photos.

The next meeting will be held in the Pettward Hall on Thursday 14 March at 7.30pm when Graham Proctor from Crown Nurseries will be suggesting how we can introduce early spring interest into our gardens.

Finally, if you are interested in joining the garden club or would like to join us for any event you will be very welcome. Membership is only £15.00 per household per year or £2.50 per person for a single meeting. For further information contact Judith Cameron (see Who's who).

Judith Cameron

Over 60s Candlestick Club

Just a reminder that our opening meeting for 2019 is coming along fast. The date is 4 April at 7.00pm at Buxhall Village Hall. Some entertainment has been booked and the Committee will lay on a few nibbles. Janet will be collecting subscriptions and also there will be a draw for Club funds. Another date for your diary is 2 May, the Mystery Trip has been booked. New members are always welcome.

Keith (736598)



BUXHALL WI

At our January meeting we were delighted to welcome new members to our Buxhall group and once again our membership exceeds 40 for another year. Our January guest speaker, Deborah Johnson, gave a thought provoking and inspiring presentation from 'Lighthouse' which our members supported through several fundraising events during 2018. *'Lighthouse' is an organisation to support and empower woman and children who have suffered or are at risk of suffering from domestic abuse or violence. It runs a Women's Centre giving support and information plus if necessary, refuge accommodation to women and their children requiring an emergency temporary home.*

Our committee members are currently finalising day outings and 'Ladies at Lunch' dates alongside supporting our community by litter picking along the Buxhall roads.

We meet every third Wednesday in the month and new members are always welcome.

Forthcoming guest speakers

March Meeting: Tai Chi and Healing Arts with Marcus Zenergise

April Meeting: Birds of Prey with Andy Hulme

Date of next meeting: 20 March 2019, 7:30pm at Buxhall Village Hall

Hilary (737671)

Onehouse News

There will be a Pancake Party on 5 March in the Trinity Hall, Onehouse at 5pm. Lots of pancakes to eat and games to play. Let Carole know if you will be attending (01449736025).

THE LENT LUNCH will be in the Trinity Hall, Onehouse on 10 April at 12 noon. No charge but donations will be gratefully received for the Bishop's Appeal for Kagera. The poor there are being encouraged to grow crops that do not need too much water! Come along, you will be very Welcome!

Just an idea - A Men's Shed for Finborough ?

You may already be aware of the success in the now up and running 'Men's Shed' at Meadlands near the Cedars Hotel in Stowmarket. Could it be made to work in Gt Finborough and our surrounding area?

I have only 'sort of 'retired from my Forge in Buxhall recently, and still have a tremendous amount of catching up to do. In fact, at least two years. However, I would be more than happy to demonstrate the art of creative blacksmithing if and when a Men's Shed is up and running.

What I see is that an enthusiastic group get together to persuade a generous farmer or someone who possesses a building large enough to accommodate several people with their tools of a wide variety, work benches, tables, chairs and a place to make tea and coffee. It may even be a structure in need of a bit of T L C. Mains Electricity and water are essential for a start. Parking spaces are also a must.

Just think it could be a club for all. A place to repair furniture, or anything requiring some T L C. A place for sketching or painting. A place to be amongst friends or make new ones. A place to pass on your skills to anyone. A sort of 'recycled teenagers den'. As I said it is just an idea. If interested please contact Graham Chaplin or John Matthissen.

Graham Chaplin (Aged 74.3/4)

Quiz Night: All welcome

There will be a Quiz Night in the Pettiward Hall on Friday 15 March at 7pm. This is being run by the local Labour Party but everyone is welcome. The last one was great fun and this one will be just as good. There will be teams of up to 6 people and, if you don't have a team, you can still book your place and you will be assigned to a table with others in the same boat. £5 per head. There will be prizes for the winning team and a raffle, of course. Bring your own drinks and snacks. Contact me on 07789 248711 to book your place, or if you have any questions.

Sue Coe

Too busy?



Let Ovensclean take care of it!

OVENCLEAN
The original oven cleaning specialists

Tel: 01359 259818
or visit www.ovenclean.com
to find your local specialist

GIDNEY PLUMBING & HEATING

Tap Changes, Ball Valves, Shower Pumps,
Water Softeners, Hot Water Cylinders,
Bathroom, Wet room & Kitchen Installs,
Radiator & Valve Replacements,
Underfloor Heating, Heating System Repairs,
Renovation & New Builds.

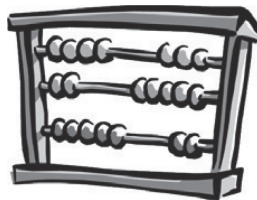
24 Hour Emergency Cover
Professional & Reliable Service

07534525263
01449 258254

gidneyph@outlook.com
www.plumbinginsuffolk.com

TWINN ACCOUNTANTS LTD

We offer an **efficient and professional accountancy** service at a very competitive rate.



- ✓ Annual accounts and tax returns for Sole Traders, Partnerships and Limited Companies
- ✓ Preparation and assistance with VAT returns
- ✓ Payroll Services
- ✓ Construction Industry returns
- ✓ Management Accounts
- ✓ Tax Planning
- ✓ Company Secretarial Services

Tel: **01284 787616**

Fax: **01284 787183**

Email: info@twinnaccountants.co.uk

www.twinnaccountants.com

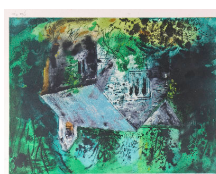
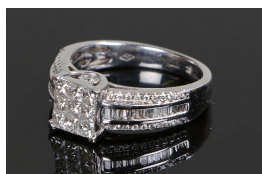
All accountants are not the same...we promise!

Bishop & Miller

AUCTIONEERS VALUERS

AUCTION CHARITY VALUATION EVENT

Bishop & Miller Auctioneers would like to invite you to attend a charity valuation event, raising money for St Andrew's Church. £3 entry, unlimited items and refreshments will be available.



St Andrews Church, Gt Finborough
Saturday 13 April 2019, 9.30am - 12.00pm

St Andrews Church, Church Road, Great Finborough, IP14 3AD

Home visits are available if you are not able to make these events, or if you have a number of larger items or entire collections.

www.bishopandmillerauctions.co.uk

19 Charles Industrial Estate, Stowmarket, Suffolk, IP14 5AH

01449 673088 enquiries@bm-auctions.co.uk

From the Rectory March 2019



It seems that the grass never quite stopped growing across our mild winter, though the dark days are over and brighter weather is very much with us. Spring brings hope and expectation of the earth-bound bulbs and there is often a lightness of spirit around. It coincides with the Christian festival of Lent which begins with Ash Wednesday the 6 March and there are services

of Holy Communion in Onehouse at 9.30am and Combs at 7.30pm. The traditional 'ashing' will be offered as a visible reminder that there are things in all our lives of which we need to repent and let go before trying to begin anew. Christianity is of course based in this concept of death and rebirth and it has elaborate rituals and doctrines to support. We all know of upset and heartache in the world and in families. It is very common to find discomfort at funerals when there is frequently family discord and it is sadly often too late to make amends. So as we move into Lent, it might be appropriate to make that call, to send that card - it might be unacknowledged, but the sender will have tried and done their part. There might be a good response. Is it worth a try this Lent? In Christian terms the Easter **joy** will be complete - in nature – the bulb **will** bloom....

Lent Groups discussion groups- will be running on Wednesdays at 7.30pm at Combs Rectory and Thursday 10am Onehouse Rectory from 13 and 14 March respectively. We will be following a booklet entitled **Happy and Blessed** written by John Cox our former Archdeacon. All welcome, booking not essential but having the booklet so you can read the 3 pages for each week beforehand would be an advantage. Please speak to the clergy.



We are planning Messy Church in Trinity Hall on **Good Friday** to run before the Walk of Witness and perhaps it may lead to a more regular events for children in our three villages. In the meantime,

our children are encouraged to join in at 3.30pm St Andrews Gt Finborough Church on Friday 1 March, Bible story, crafts prayers and games plus tea for all up to 10 and Sunday 3 March 11am, St Marys Church Combs

Electoral Rolls

are being revised for all our churches and existing members should soon receive a form, if not please ask. Others are welcome to apply and there are full details in the churches

Bishops' Pilgrimage 2019 - 6 to 15 March

Our Bishops begin at Southwold and walk to Stowmarket for Diocesan Synod. Full details are available but you are invited specifically to join them for Morning Prayer at St Mary's Church Bacton at 9am on 15 March or at St Peter's Stowmarket at 4pm for Evening Prayer. They usually

have some people walk with them, so why not?

www.cofesuffolk.org/bishops.

Rev Chris

Parish Register for Gt Finborough

Baptism

Rob and Darcy White

27 January 2019

Interment of Ashes

Barbara Spalding

Died 21 December 2018 aged 81

Interment 17 January 2019 following funeral at Mickfield
Evangelical church



ALL SEASONS LANDSCAPE GARDENING

Garden Landscaping • Turf Laying • Paths & Patios
Garden Maintenance • Hedge Cutting • Fencing
Specialise in Low Maintenance Gardens

Established since 1998 Fully Insured & Guaranteed

For FREE estimates and more information on our service call **Simon** on

01449 720221 / 07922 035204

email: suffolksi68@gmail.com

www.allseasonslandscapegardening.co.uk

Fun Quiz

The next Fun Quiz will be held in Buxhall Village hall on

Saturday 9 March at 7.30pm

£3.00 per person. Please bring your own drinks, glasses and nibbles.

To book in you or your team please ring Mim / Keith on 736598 by Friday 8 March . Proceeds for the refurbishment of the Village Hall kitchen, Offers of draw prizes will be greatly appreciated.

St Andrews Church

We thank Mary Williams and Debby Peck for their roles of Church and Minute Secretary respectively as they come to the end of their term in April. Both have served for some years. We also thank Sadie Watts as she ends her term as Churchwarden during which much has been achieved. We therefore have three essential posts vacant and if anyone would be prepared to 'step up to the plate' could they have a word with me, 673280 or Tim Hines please. None are particularly onerous and there are about 5 meetings a year. All good wishes

Rev Chris

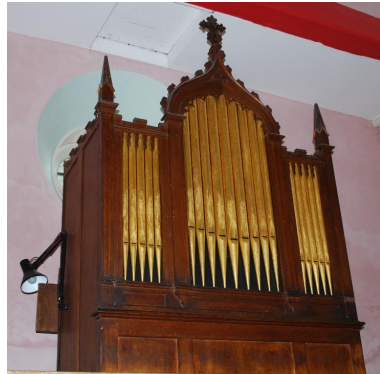
Concert

An evening of Music at Shelland Church
featuring our famous Barrel Organ and
Local Singing Trio, The Kettle Girls

Saturday 6th April

**Doors open at
6.45pm for 7.15pm**

Tickets: £7.50



Available From; Martin: 07532 024655

Tea Cups Tea Rooms, Woolpit

Lisa: 01359 245013 or lisa.hicks@live.co.uk



Providing Personal Care in your own Home



**Recruiting
NOW!**
We need
exceptional
people who
love to
care

Do you need help with:

Personal Care
Dementia Care
Respite Care
Help Around the
House
Day Trips Special
Occasions

Request a
Brochure or book
an appointment
on 01449 763086
or 01284 711845



We only employ people who love to care.

 **My Care
at Home**
Supporting Independent Living

www.mycare-at-home.co.uk

Tank Change Limited

Does your Oil Tank need replacing?
We are your local oil tank installer established
since 1989 with over 16,000 installations to date

- New oil tank installations, relocations and servicing
- Emergency pump out service available for leaking oil tanks
- Kingspan Titan polyethylene tanks and steel tanks held in stock
- OFTEC registered
- Kingspan Titan Accredited
- Fully insured
- Parish magazine discount
- Free surveys

Tel. 01449 781210

Email: enquiries@tankchange.co.uk

www.tankchange.co.uk



Registered
Business



BOOK CLUB

We started a Book Club in the Village in March 2014 and I am delighted to report that exactly 5 years and 60 books later we are going strong.

We have read a wide variety of books from so called 'Best Sellers' to Historical Fiction, Autobiography, Crime, True Stories, Dystopian, and the occasional Classic. We have had trips to local Literary Festivals and the Cinema and Theatre to see adaptations of books we have read.

We have 9 members and meet once a month. We are an informal group and don't take ourselves too seriously! If you think you might be interested in joining us please get in touch.

Belinda Aldous (belinda.aldous@btinternet.com)

T.P. Services

**UPV-c Window & Door
Repairs**

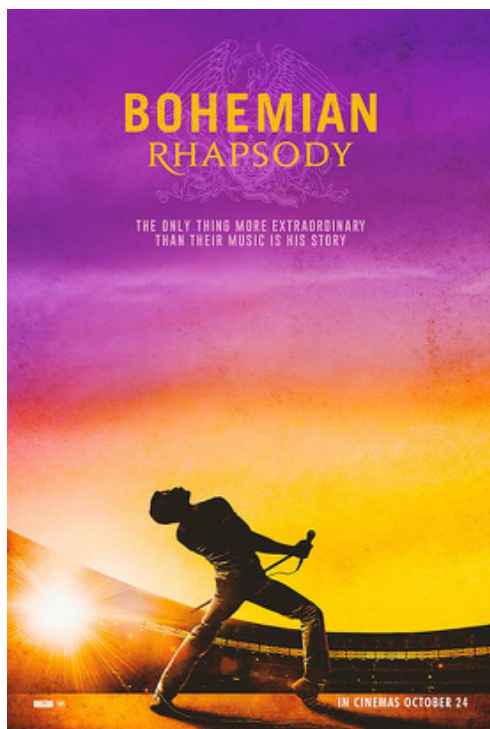
**Sealed Units, Hinges,
Locks, Handles, Letter Boxes**

**Over 30 years' experience,
free quotations**

**Contact: Tom
Mob: 07957 098118**

Email: tpservices65@gmail.com

FINBOROUGH FILM NIGHT



'Bohemian Rhapsody' (12A)

Pettiward Hall

Wednesday 13th March 2019

- Screening commences at 7.00pm
- Complimentary tea & biscuits in the interval
- Tickets: Adults £5 Children £3
- Tickets can be purchased on the door.

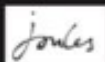
For more information please contact **Norman** on 07930 338580

HIGH FLYERS

EQUESTRIAN & COUNTRY CLOTHING



ARIAT®



dubarry®
of Ireland

Schöffel



FAIRFAX & FAVOR
ENGLAND



AIGLE

MUSTO®
PERFORMANCE



*We also stock a selection of Horse Feed/Bedding/Supplements,
Dog Food, Bird/Chicken Feed*

HIGHFIELDS FARM, BATTISFORD, STOWMARKET, SUFFOLK IP14 2HL
TEL: 01449 722122 • WWW.HIGHFLYERSCLOTHING.CO.UK

HIGH FLYERS SELF-STORAGE

20' X 8' X 8' CONTAINERS (1,172 CU.FT)

AVAILABLE
FOR RENT

HIGHFIELDS FARM, BATTISFORD,
STOWMARKET, SUFFOLK IP14 2HL

TEL: 01449 722122

WWW.HIGHFLYERSCLOTHING.CO.UK

A & C Fencing & Landscaping.

Fence erection - Landscaping - Patios and sleeper walls - Shed bases laid & sheds erected - Lawns & grass areas up to 4 acres cut - Hedge cutting - Driveways - General garden maintenance - Any small building projects.

Free no obligation quotes contact Andrew Wade.

07748785197 or 01449674093 or email

wade.andrew63@gmail.com



**Professional Tree Surgeon and team
that can maintain your gardens big or small**



Trees & Hedges

Felled, Pruned, Shaped, Dead / Broken & dangerous hanging branches removed to make them safe.

Hedges cut and maintained to your specification

Gardens

Lawns cut, Borders trimmed, Shrub beds cleaned

Ground Clearance

Large or small areas of scrub cleared and removed

Fences

Panelled. Wired, Post & Rail, Erected or Mended

Free, no obligation, quotations

01449 720157 / 07788590779

james.firman@treesandfences.com / www.treesandfences.com

BARGEWELL SKIP HIRE

2, 3, 4, 5, 6, 7 & 8 yard skips

Long or short term hire

Delivery service 7 days a week

Fast friendly service

Stowmarket 01449 615056

Mobile: 07770 452378

High Rd, Gt Finborough, Suffolk

www.bargewellskiphire.com

Credit cards accepted

TOMLINSON GROUND CARE

Horticultural & Garden Machinery Suppliers

Sales • Service • Parts • Repairs



1 Brettenham Road
Buxhall, Stowmarket, IP14 3DL
www.tomlinsongroundcare.co.uk

01449 736060

Opening Times

Mon– Fri 7.30 am to 5.00 pm

Saturday 7.30 am to 12.30 pm



Visit our LARGE SHOWROOMS

This advert is too small to be able to show you all we have to offer, please visit our website or come and have a cup of tea/coffee and discuss your requirements.

Main Al-Ko and John Deere Dealers,
over 15 ride-on and 25 walk-behind mowers to Try before You Buy

Arboricultural & Landscaping Solutions

- All Aspects of Tree Surgery
- Soft & Hard Landscapping
- Maintenance & Lawn Care
- Fencing
- Domestic & Commercial
- Fully Insured
- NPTC Qualified

For more information please visit:
www.greenscenetreesurgery.co.uk



GREEN SCENE

PLEASE CONTACT US TODAY FOR FREE QUOTATIONS & ADVICE

Phone: 01359 298141 Mobile: 07866 866 880

Email: greenscene@hotmail.co.uk



Andrew Bingham

INDEPENDENT FUNERAL SERVICE

Local Caring Independent Funeral Service

24 Hour Personal Service * Private Chapel * FREE Parking

www.andrewbingham.co.uk

01449 771666

The Nutshell, Milton Road South, Stowmarket, IP14 1EZ



Golden Charter
Funeral Plans



**Are you looking for a high-quality decorator?
Look no further!
Service with a smile, for all your decorating needs!**

Honest, reliable service
Clean and tidy

Claire Marks

Tel: 07895 277357

Email:
Claire.marks@housetohomedecorating.co.uk

Web: www.housetohomedecorating.co.uk

*Fed up of running around
after your car?*

Why not give us the inconvenience
– it's part of our service

WE COLLECT & DELIVER

Servicing, Welding,
MOTs arranged
Air-conditioning recharged
General Repairs –
shocks, clutches, brakes etc
All work guaranteed

S & P Motocare
Est 1990

Contact: Shane
Tel: 01449 771102 or 07802 545737

***Personal Service at
Competitive Rates!***



REWTS
TREES AND GARDENS



Tel: 0782 5253 720

Email: info@rewtstreesandgardens.co.uk
www.rewtstreesandgardens.co.uk

Qualified tree surgeon & horticulturist
offering

- ☐ **Tree surgery:** from light pruning to large tree take down, surveys and stump removal.
- ☐ **Garden landscaping:** fencing, patios, decking, ponds, water features, planting designs.
- ☐ **Garden maintenance.**
- ☐ **Firewood:** Split and seasoned ready to burn. Any size, any quantity.

LEAH LOUISE HAIR

*Introductory Offer 20% discount on
your first service*

*I offer both home visits & Salon service
at "Little Village Salon" in Haughtley.*

All colour services (with patch test)

Wet/dry cuts ~ Cut & blow dry

Re-styles ~ Blow dry's ~ Hair ups ~ Perms

Tape hair extensions ~ Wedding packages

Free consultations

*Any questions on prices or to book
please contact me on:*

Mobile ~ 07432889625

Facebook ~ Leah Louise hair

Look forward to meeting you!

CHIMNEY SWEEP

ECO SWEEP

CHIMNEY SERVICES

- NEW POWER SWEEPING METHOD USED
FOR A MORE THOROUGH CHIMNEY CLEAN
THAN BRUSHES.
- INDUSTRIAL HEPA FILTERED VACUUM.
- FULLY INSURED.
- INSURANCE RECOGNIZED CERTIFICATES ISSUED.
- SPOTLESS, RELIABLE AND FRIENDLY SERVICE.
- ALL CHIMNEYS, WOOD BURNERS, AGA, BOILER
FLUES SWEEP.
- GUILD OF MASTER SWEEPS CERTIFICATED MEMBER.



TEL. 01359 232335



Charisma Hair

01449 677202

86a Forest Road, Onehouse
charismahair.co.uk / 01449 677202

- Full range of styling and colouring
- OPU manicures including gel polish
 - Eyebrow tint and shape

(Closed on Mondays and Tuesdays)

NEW CLASS !!



ZUMBA

FITNESS

PETTIWARD HALL GT FINBOROUGH

EVERY THURSDAY 7-8PM

DANCE FITNESS CLASS FOR ALL LEVELS



FIRST CLASS FREE

07502464778



ZUMBAWITHLOOSEE

WWW.ZUMBAWITHLOOSEE.CO.UK

Goode Shepherd Huts

Hand crafted to your design

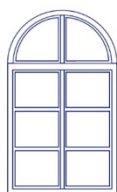


www.goodeshepherdhuts.co.uk

Call Tom: 07789 330 422

The Old Stack Yard, Forward Green, Suffolk, IP14 5HU

We also work with oak: www.suffolkoak.co.uk



MILES ROLFE JOINERY

Production, Design & Fitting of All
Aspects of Joinery & Furniture

Gt. Finborough • Suffolk

07880 776845 mobile
mrjoinery@live.com

01449 771338 evening
milesrolfejoinery.co.uk

 Follow me on Facebook

CHURCH SERVICES FOR MARCH 2019

3 March: Sunday next before Lent,

9.00 am	Holy Communion	Little Finborough
9.30 am	Sung Eucharist	Buxhall
9.30 am	Morning Worship	Shelland
11.00 am	Holy Communion	Great Finborough
11.00 am	Holy Communion (by extension)	Onehouse
11.00 am	Worship & Messy Church	Combs

6 March: Ash Wednesday

9.30 am	Holy Communion	Onehouse
7.30 pm		Combs

10 March: First Sunday in Lent

9.30 am	Holy Communion	Harleston
9.30 am	Holy Communion	Shelland
9.30 am	Matins	Buxhall
11.00 am	Holy Communion	Combs
11.00 am	Morning Worship	Onehouse
3.00 pm	Evensong	Great Finborough

17 March: Second Sunday in Lent

9.00 am	Holy Communion	Little Finborough
9.30 am	Holy Communion	Shelland
11.00 am	Morning Worship	Harleston
11.00 am	Family Communion	Combs
11.00 am	Holy Communion	Great Finborough
6.30 pm	Evensong	Buxhall

24 March: Third Sunday in Lent

9.30 am	Holy Communion	Buxhall
9.30 am	Holy Communion	Harleston
11.00 am	Holy Communion	Combs
11.00 am	Holy Communion	Onehouse
11.00 am	Morning Worship	Great Finborough
3.00 pm	Evensong	Little Finborough

31 March: Fourth Sunday in Lent, Mothering Sunday

9.30 am	Holy Communion for Mothering Sunday	Shelland
11.00 am	Holy Communion for Mothering Sunday	Combs
11.00 am	Morning Worship for Mothering Sunday	Great Finborough
11.00 am	Morning Worship for Mothering Sunday	Onehouse

We meet for:

Midday Prayer 12.00 noon on Tuesday at St Mary's Buxhall

Holy Communion 9.30 am on Wednesday at Trinity Hall Onehouse

Evensong Prayer 4.30 pm on Thursdays at St Andrew's Great Finborough

Morning Prayer 10.00 am on Saturdays at St. Mary's Combs (Lady Chapel)

Great Finborough Mobile Library Service 2019

Oak Close 4.10pm to 4.30pm Fridays as follows:

Mar 15, Apr 12, May 10, Jun 7, Jul 5, Aug 2, Aug 30, Sep 27, Oct 25, Nov 22 and Dec 20.



F. G. BROWN – OPTICIANS

**Denmark House, 41 Bury
Street, Stowmarket.**

Tel: 01449 612812/674030

As independent opticians we offer a more personalised eye care service that you can trust for all the family

Professional Eye care – Quality Products – Personal Service

Opening hours:-Tuesday-Friday 9.00 am – 5.30 pm
Saturday 9.00 am – 5.15 pm

Your sight care is our priority

WHO'S WHO IN GREAT FINBOROUGH

Chair, Parish Council	Peter Turner	674407
Clerk, Parish Council	Paula Gladwell finboroughparishclerk@gmail.com	01284 828112
District Councillor	John Matthissen councillor@matthissen.net	258894
County Councillor	Penny Otton penny.otton@councillors.suffolkcc.gov.uk	737870
Newsletter Editor	Simon Tarabella simon.tarabella@great-finborough.suffolk.gov.uk	672072
Priest in Charge	Rev. Chris Childs <i>Combs Rectory, 135 Poplar Hill, IP14 2AY</i> revcchilds@aol.com	673280
Associate Priest	Rev Canon Pauline Higham <i>The Rectory, Onehouse, IP14 2AY</i>	771791
Church Warden	Tim Hines	775525
Church Warden	Sadie Watts	612397
Pettward Hall Management Committee	Mary Preece	771360
Lettings/Keyholder	mary.preece1@btinternet.com	
Great Finborough & Buxhall Under 5s	Delia Prior delia@gfbunderfive.co.uk	07513 140072
Great Finborough & Buxhall Brownies	halo.durrant@gmail.com	
Allotments Association	Mary Smyth	672533
Candlestick Club	Keith Proctor	736598
Great Finborough & District Garden Club	Judith Cameron judyandian@btinternet.com	672978
Chestnut Horse Pub	David & Jade Lewis	674688
Buxhall Women's Institute	Hilary Hall hilary-hall@hotmail.co.uk	
Head teacher, Great Finborough	Stephen Dodd	613208
Primary School	headteacher@greatfinborough.suffolk.sch.uk	
Police (Stowmarket SNT)	Stowmarket.snt@suffolk.pnn.police.uk	101
Stowmarket High School		613541
Stowmarket Health Centre		776000
Combs Ford Surgery		678333
Stowmarket Library		613143
Village website: www.greatfinborough.onesuffolk.net		
Church website http://www.standrewsgtfinborough.co.uk/		
Primary School website: www.greatfinborough.suffolk.sch.uk		